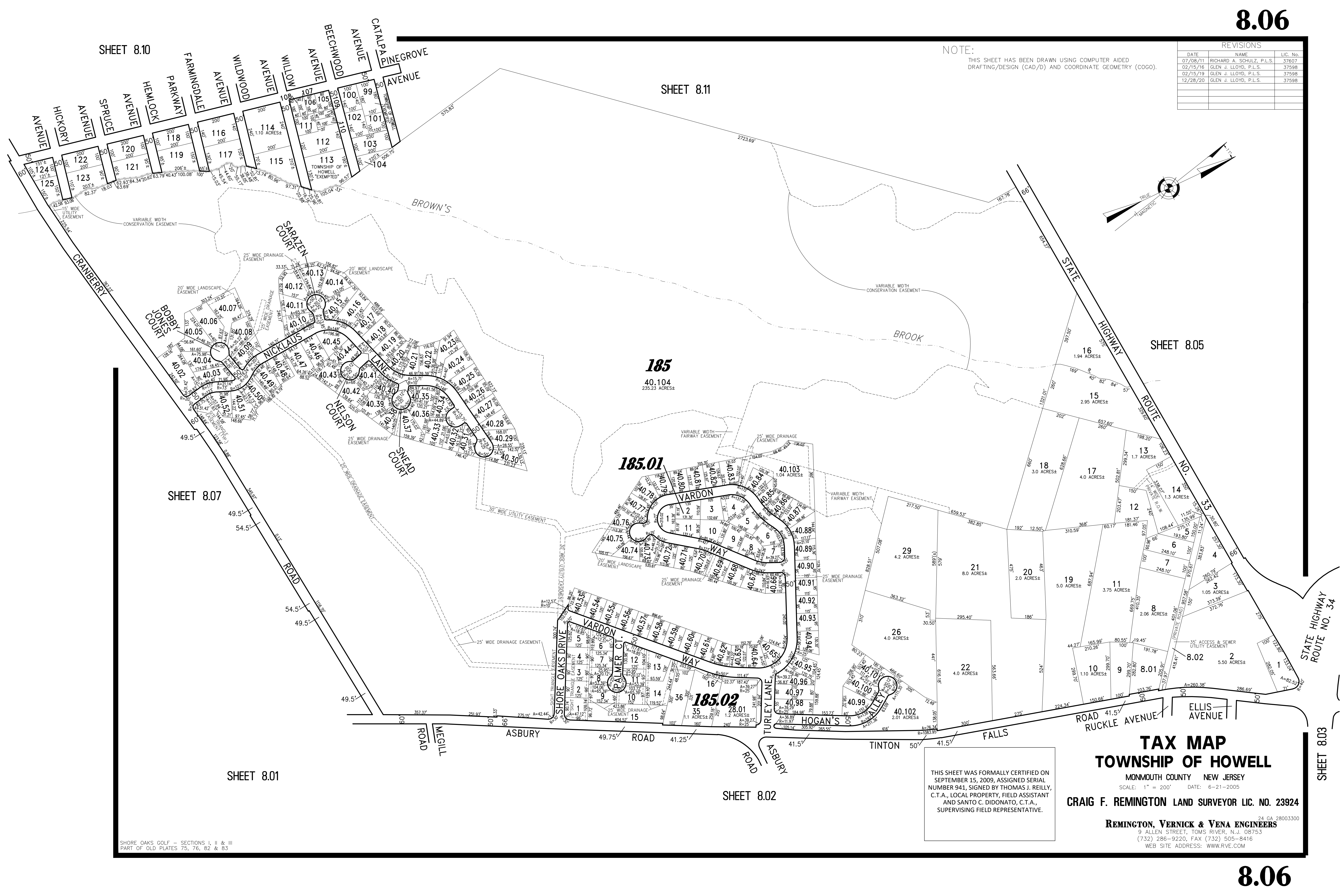
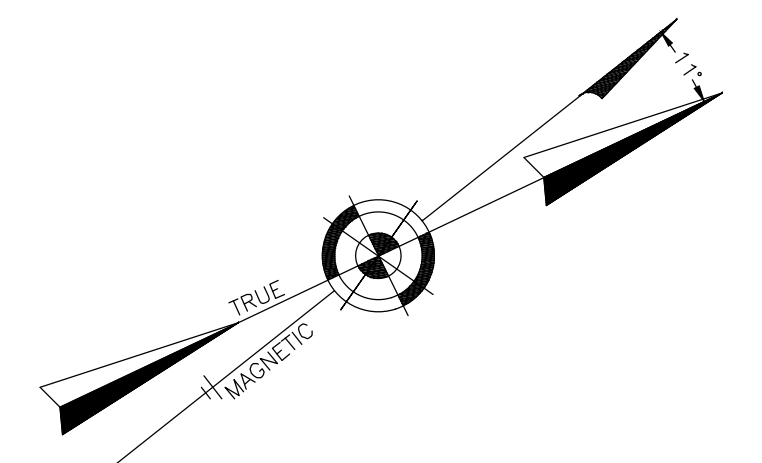


REVISIONS		
DATE	NAME	LIC. No.
07/08/11	RICHARD A. SCHULZ, P.L.S.	37607
02/15/16	GLEN J. LLOYD, P.L.S.	37598
02/15/19	GLEN J. LLOYD, P.L.S.	37598
12/28/20	GLEN J. LLOYD, P.L.S.	37598

NOTE:  
 THIS SHEET HAS BEEN DRAWN USING COMPUTER AIDED  
 DRAFTING/DESIGN (CAD/D) AND COORDINATE GEOMETRY (COGO).



SHEET 8.07

SHEET 8.01

SHEET 8.02

SHEET 8.05

STATE HIGHWAY ROUTE NO. 34

SHEET 8.03

**TAX MAP**  
**TOWNSHIP OF HOWELL**

MONMOUTH COUNTY NEW JERSEY  
 SCALE: 1" = 200' DATE: 6-21-2005

CRAIG F. REMINGTON LAND SURVEYOR LIC. NO. 23924

REMINGTON, VERNICK & VENA ENGINEERS  
 24 GA. 28003300  
 9 ALLEN STREET, TOMS RIVER, N.J. 08753  
 (732) 286-9220, FAX (732) 505-8416  
 WEB SITE ADDRESS: WWW.RVE.COM

THIS SHEET WAS FORMALLY CERTIFIED ON  
 SEPTEMBER 15, 2009, ASSIGNED SERIAL  
 NUMBER 941, SIGNED BY THOMAS J. REILLY,  
 C.T.A., LOCAL PROPERTY, FIELD ASSISTANT  
 AND SANTO C. DIDONATO, C.T.A.,  
 SUPERVISING FIELD REPRESENTATIVE.

SHORE OAKS GOLF - SECTIONS I, II & III  
 PART OF OLD PLATES 75, 76, 82 & 83