

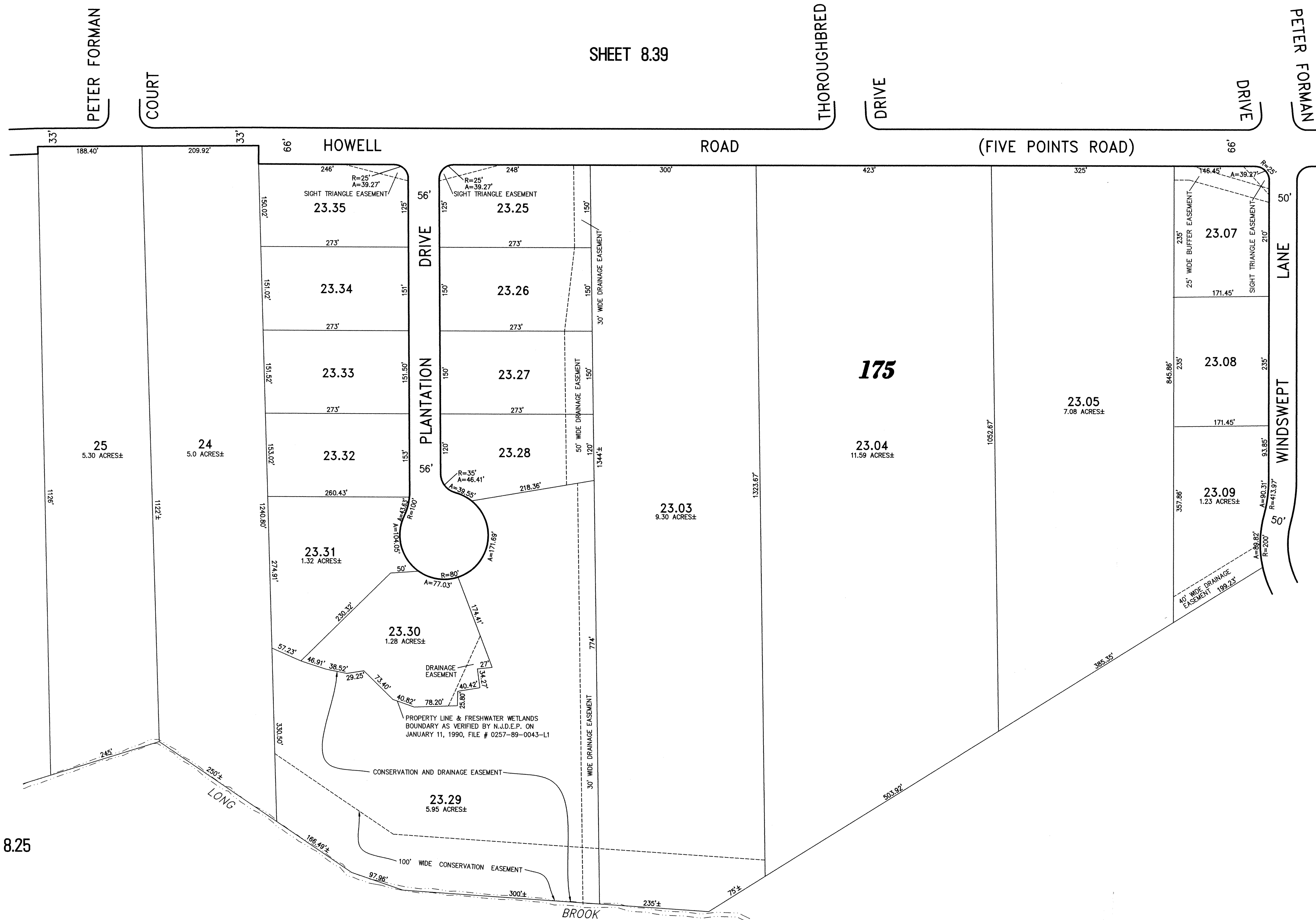
SHEET 8.39

SHEET 8.26

SHEET 8.25

SHEET 8.24

SHEET 8.22



NEW JERSEY DEPARTMENT OF THE TREASURY  
 DIVISION OF TAXATION  
 PROPERTY ADMINISTRATION  
 APPROVED AS A TAX MAP PURSUANT TO THE AUTHORITY OF  
 N.J.S.A. 54:1-15 & 54:20-1  
 FOR THE DIRECTOR, DIVISION OF TAXATION  
 C.T.A.  
 THOMAS J. REILLY, CHIEF LOCAL PROPERTY FIELD ASSISTANCE  
 C.T.A.  
 CRAIG F. REMINGTON, SUPERVISOR FIELD REPRESENTATIVE  
 DATE: SEP 15 2003 SERIAL NO. 94

**TAX MAP**  
**TOWNSHIP OF HOWELL**

MONMOUTH COUNTY NEW JERSEY  
 SCALE: 1" = 100' DATE: 6-21-2005  
**CRAIG F. REMINGTON LAND SURVEYOR LIC. NO. 23924**

**REMINGTON, VERNICK & VENA ENGINEERS**  
 24 GA 28003300  
 9 ALLEN STREET, TOMS RIVER, N.J. 08753  
 (732) 286-9220, FAX (732) 505-8416  
 WEB SITE ADDRESS: WWW.RVVE.COM

PART OF OLD PLATES 55 & 58