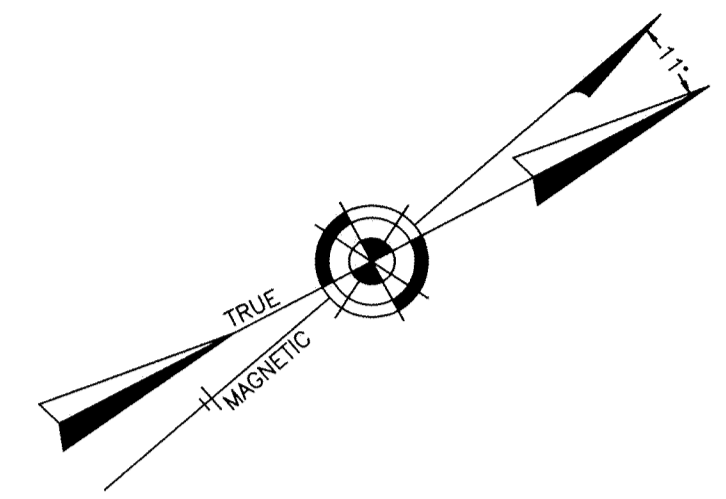


TOWNSHIP OF FREEHOLD
COUNTY OF MONMOUTH



SHEET 8.36

SHEET 8.35

SHEET 8.34

SHEET 8.38

SHEET 8.33

SHEET 8.28

TAX MAP
TOWNSHIP OF HOWELL
MONMOUTH COUNTY NEW JERSEY

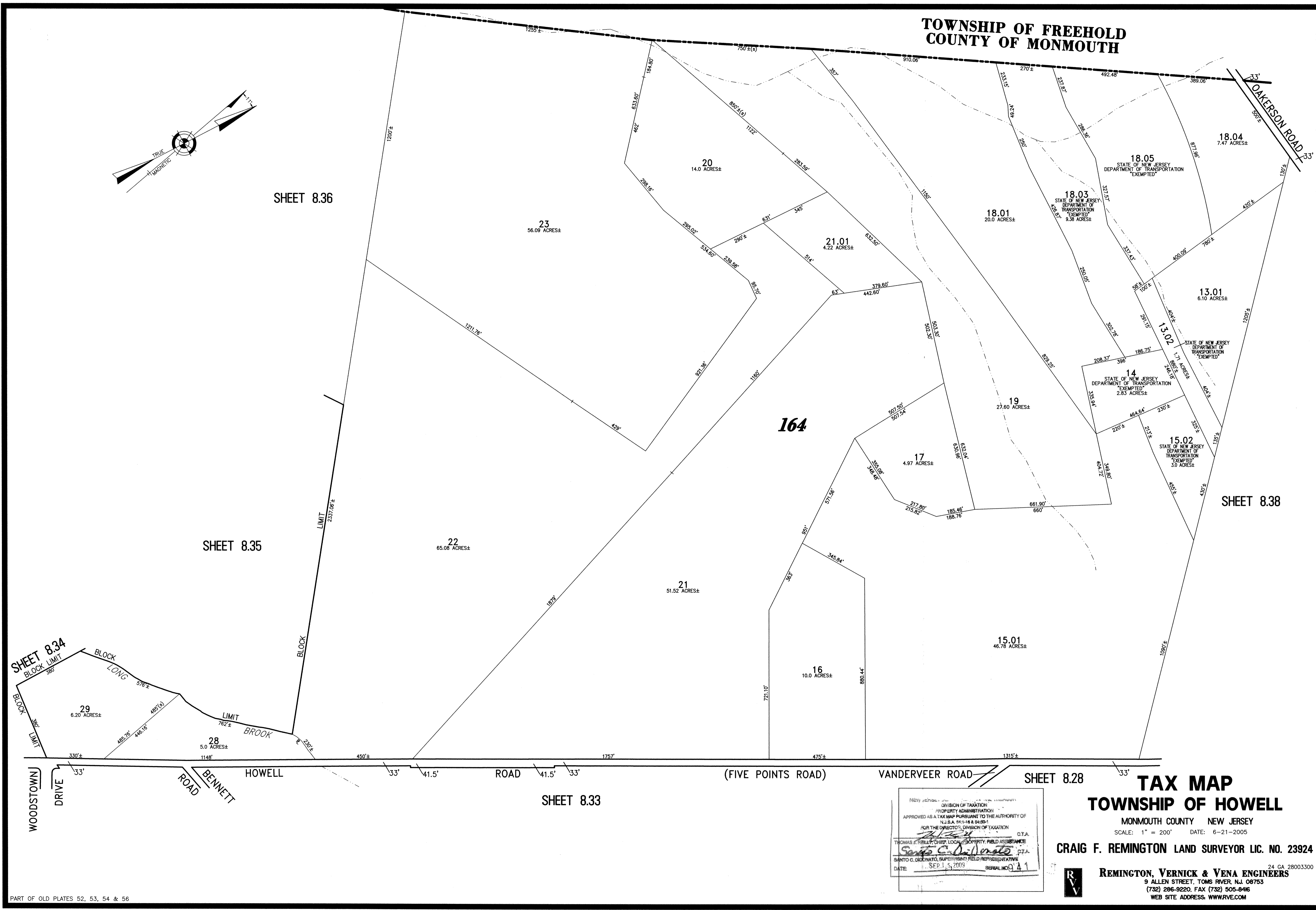
SCALE: 1" = 200' DATE: 6-21-2005

CRAIG F. REMINGTON LAND SURVEYOR LIC. NO. 23924



REMINGTON, VERNICK & VENA ENGINEERS
24 GA 28003300
9 ALLEN STREET, TOMS RIVER, NJ 08753
(732) 286-9220, FAX (732) 505-8446
WEB SITE ADDRESS: WWW.RVVE.COM

PROPERTY ADMINISTRATION
APPROVED AS A TAX MAP PURSUANT TO THE AUTHORITY OF
N.J.S.A. 54:1-18 & 54:20-1
FOR THE DIRECTOR, DIVISION OF TAXATION
THOMAS J. REILLY, CHIEF, LOCAL PROPERTY FIELD ASSISTANCE
SANTO C. D'AMATO, SUPERVISOR, FIELD REPRESENTATIVE
DATE: SEP 15, 2005 SERIAL NO: 41



PART OF OLD PLATES 52, 53, 54 & 56