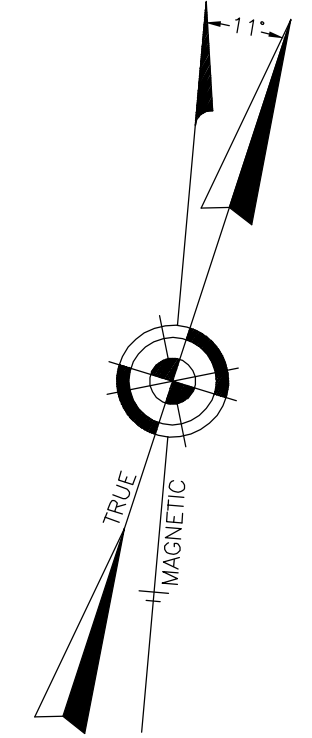
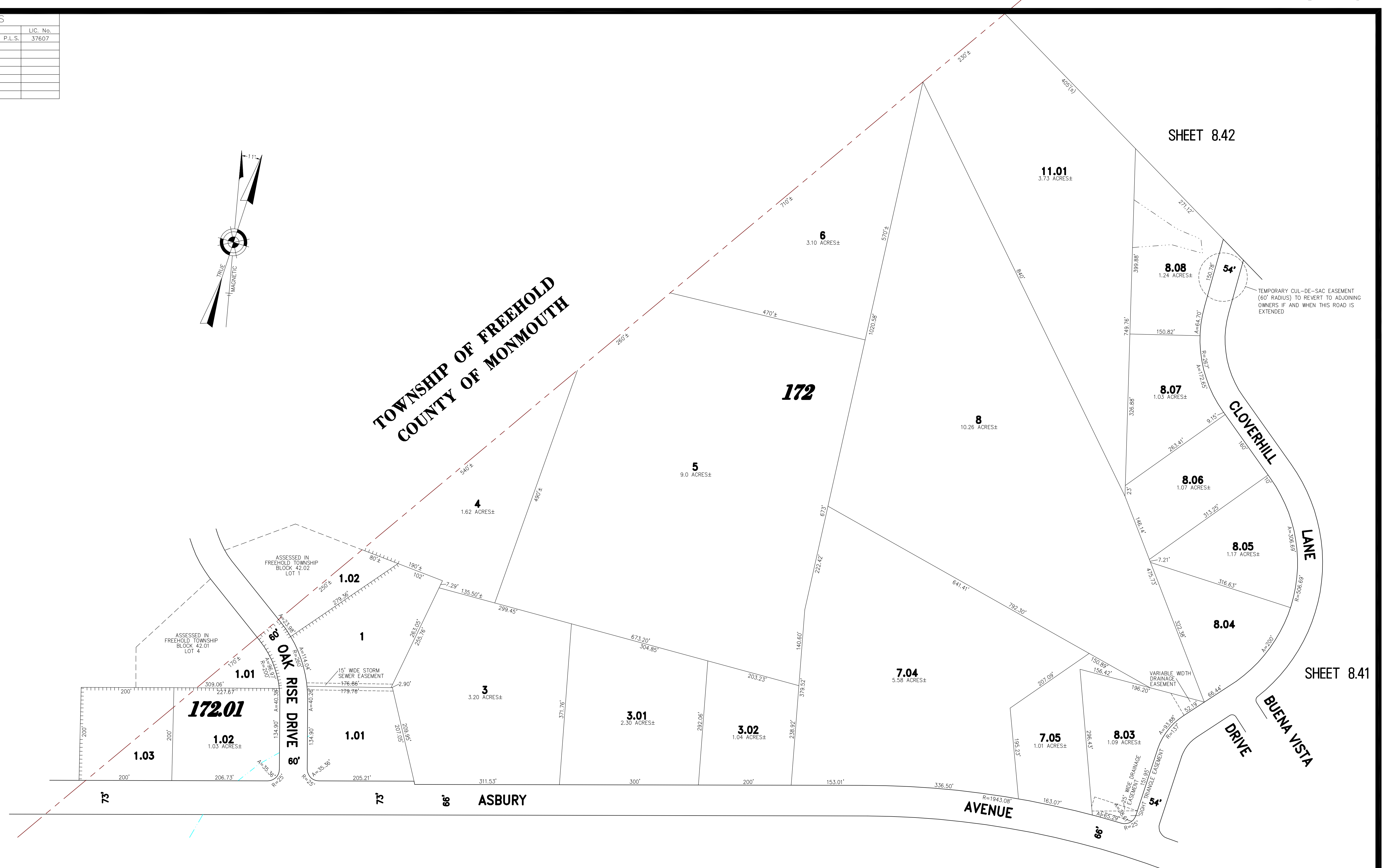


REVISIONS		
DATE	NAME	LIC. No.
07/08/11	RICHARD A. SCHULZ, P.L.S.	37607



**TOWNSHIP OF FREEHOLD
COUNTY OF MONMOUTH**



SHEET 8.42

SHEET 8.41

SHEET 8.39

**TAX MAP
TOWNSHIP OF HOWELL**

MONMOUTH COUNTY NEW JERSEY
SCALE: 1" = 100' DATE: 6-21-2005

CRAIG F. REMINGTON LAND SURVEYOR LIC. NO. 23924

THIS SHEET WAS FORMALLY CERTIFIED ON SEPTEMBER 15, 2009, ASSIGNED SERIAL NUMBER 941, SIGNED BY THOMAS J. REILLY, C.T.A., LOCAL PROPERTY, FIELD ASSISTANT AND SANTO C. DIDONATO, C.T.A., SUPERVISING FIELD REPRESENTATIVE.

REMINGTON, VERNICK & VENA ENGINEERS
24 GA 28003300
9 ALLEN STREET, TOMS RIVER, NJ 08753
(732) 286-9220, FAX (732) 505-9416
WEB SITE ADDRESS: WWW.RVVE.COM

PART OF OAK RISE & PART OF KNOB HILL ESTATES
PART OF OLD PLATES 56 & 57