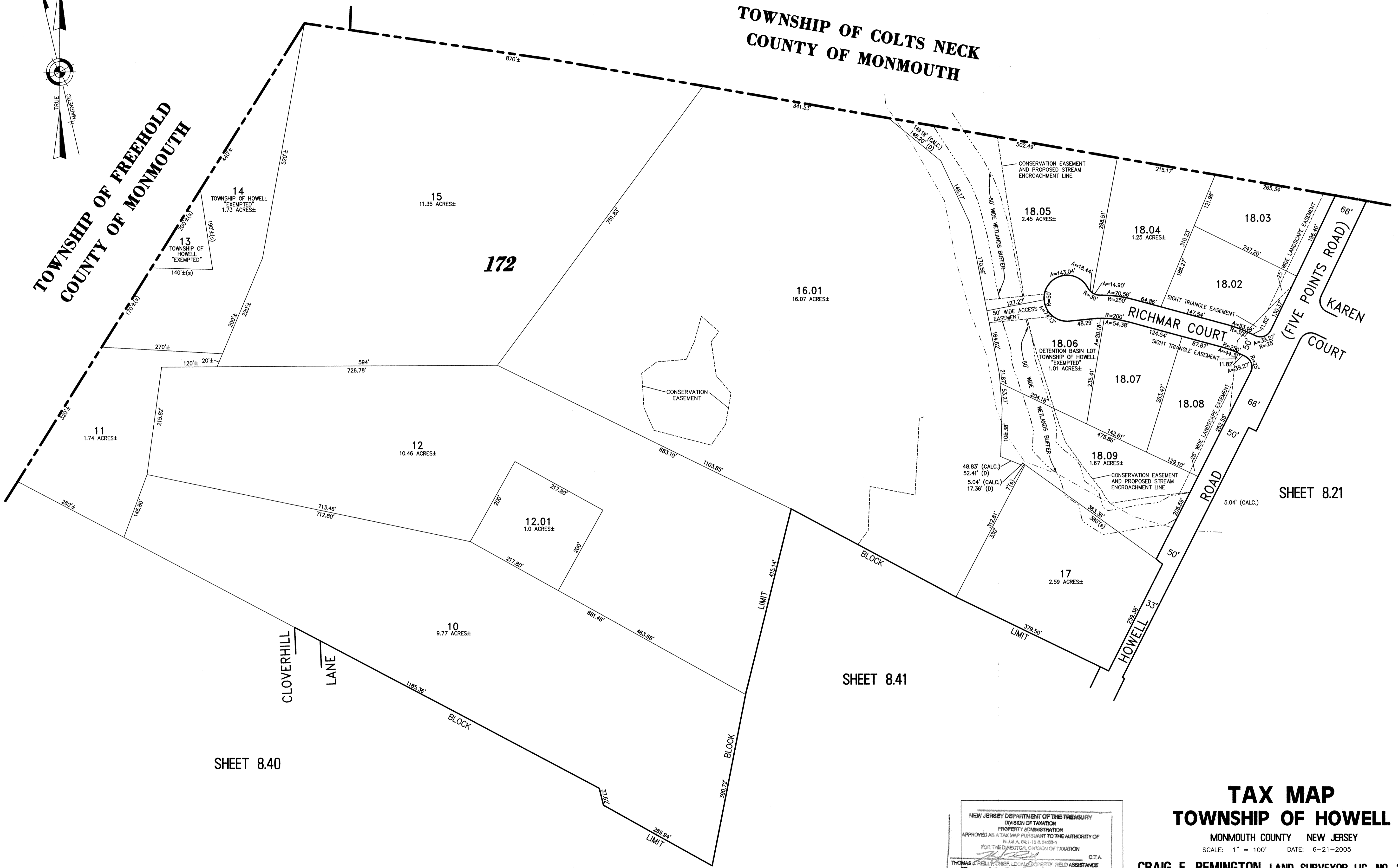


TOWNSHIP OF FREEHOLD  
COUNTY OF MONMOUTH

TOWNSHIP OF COLTS NECK  
COUNTY OF MONMOUTH

172



11  
1.74 ACRES±

12  
10.46 ACRES±

10  
9.77 ACRES±

12.01  
1.0 ACRES±

16.01  
16.07 ACRES±

15  
11.35 ACRES±

14  
TOWNSHIP OF HOWELL  
"EXEMPTED"  
1.73 ACRES±

13  
TOWNSHIP OF HOWELL  
"EXEMPTED"

18.05  
2.45 ACRES±

18.04  
1.25 ACRES±

18.03

18.02

18.06  
DETENTION BASIN LOT  
TOWNSHIP OF HOWELL  
"EXEMPTED"  
1.01 ACRES±

18.07

18.08

18.09  
1.87 ACRES±

17  
2.59 ACRES±

SHEET 8.40

SHEET 8.41

SHEET 8.21

NEW JERSEY DEPARTMENT OF THE TREASURY  
DIVISION OF TAXATION  
PROPERTY ADMINISTRATION  
APPROVED AS A TAX MAP PURSUANT TO THE AUTHORITY OF  
NJLSA § 181-15.6 (2004)  
FOR THE DIRECTOR, DIVISION OF TAXATION  
THOMAS F. REILLY, CHIEF, LOCAL PROPERTY FIELD ASSISTANCE C.T.A.  
Santo Calabrese C.T.A.  
GAIATO C. DIONATO, SUPERVISING FIELD REPRESENTATIVE  
DATE: SEP 15 2009 SERIAL NO. 941

**TAX MAP**  
**TOWNSHIP OF HOWELL**  
MONMOUTH COUNTY NEW JERSEY  
SCALE: 1" = 100' DATE: 6-21-2005  
**CRAIG F. REMINGTON LAND SURVEYOR LIC. NO. 23924**  
**REMINGTON, VERNICK & VENA ENGINEERS**  
24 GA 28003300  
9 ALLEN STREET, TOMS RIVER, N.J. 08753  
(732) 286-9220, FAX (732) 505-8446  
WEB SITE ADDRESS: WWW.RVVE.COM

PART OF OLD PLATES 56 & 57