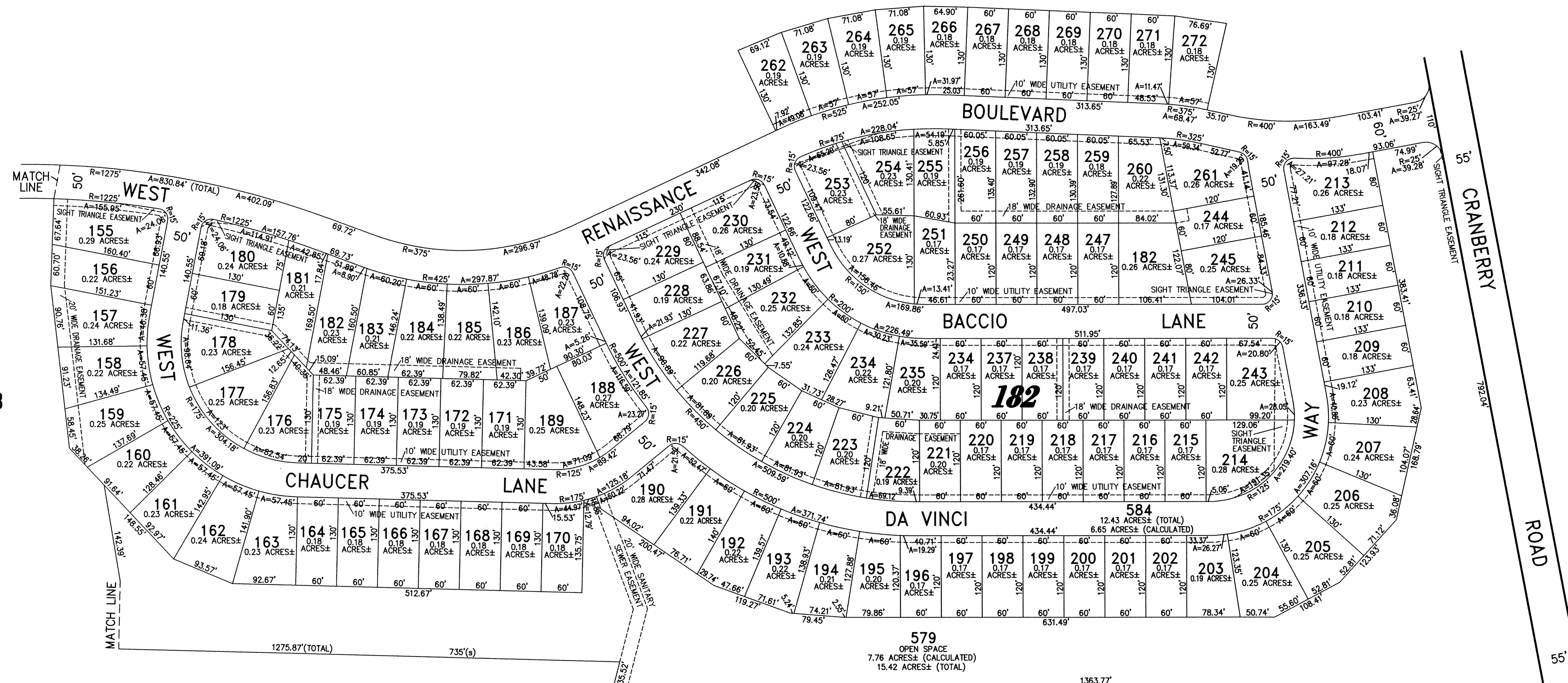


SHEET 8.12

SHEET 8.43

SHEET 8.08

SHEET 8.13



COLTS NECK CROSSING AT HOWELL
SHEET PAGES 4-6
PART OF OLD PLATE 69

NEW JERSEY DEPARTMENT OF THE TREASURY
DIVISION OF TAXATION
PROPERTY ADMINISTRATION
APPROVED AS A TAX MAP PURSUANT TO THE AUTHORITY OF
N.J.S.A. 54:15-1 & 54:15-2
FOR THE DIRECTOR, DIVISION OF TAXATION
C.T.
THOMAS J. REILLY, CHIEF, LOCAL PROPERTY FIELD ASSISTANCE
C.T.
SANTO C. DIDONATO, SUPERVISING FIELD REPRESENTATIVE
DATE: SEP 15 2003 SERIAL NO. 941

TAX MAP
TOWNSHIP OF HOWELL
MONMOUTH COUNTY NEW JERSEY
SCALE: 1" = 100' DATE: 6-21-2005
CRAIG F. REMINGTON LAND SURVEYOR LIC. NO. 23924
REMINGTON, VERNICK & VENA ENGINEERS 24 GA 28003300
9 ALLEN STREET, TOMS RIVER, N.J. 08753
(732) 286-9220, FAX (732) 505-8446
WEB SITE ADDRESS: WWW.RVVE.COM