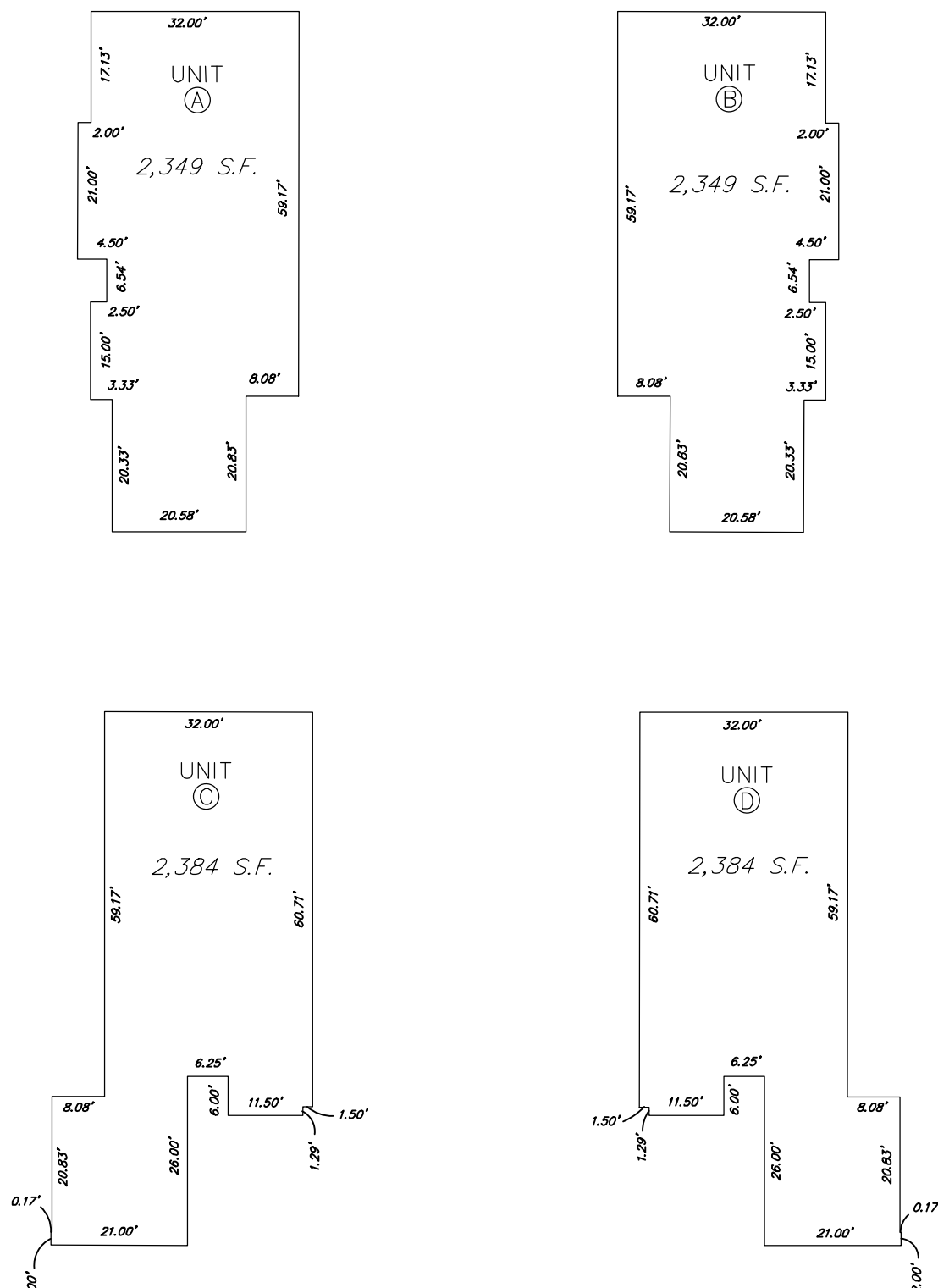
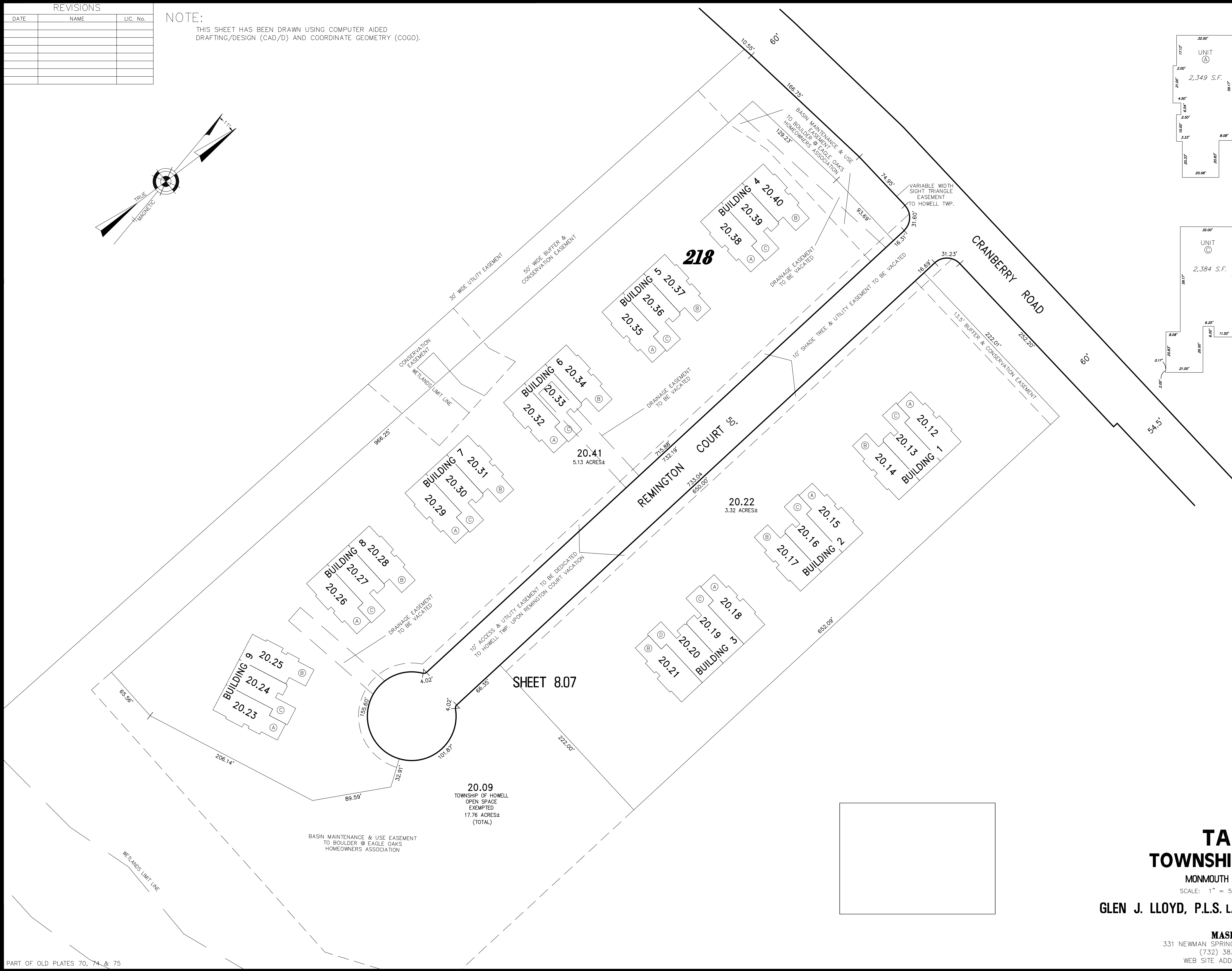
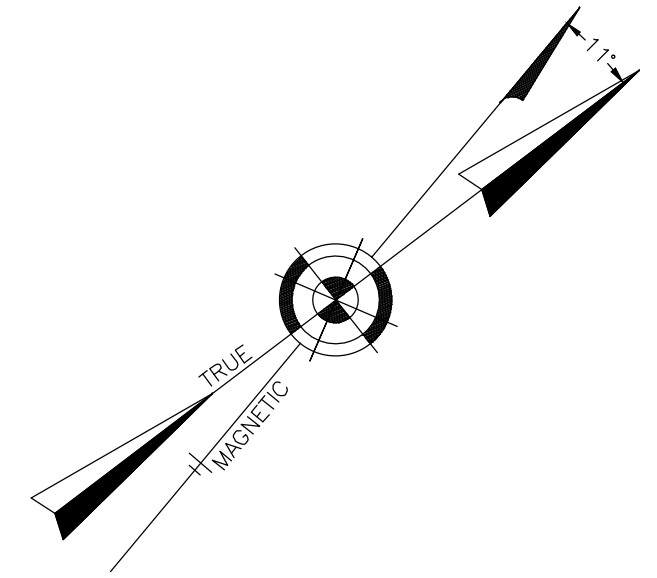


REVISIONS		
DATE	NAME	LIC. No.

NOTE:  
THIS SHEET HAS BEEN DRAWN USING COMPUTER AIDED  
DRAFTING/DESIGN (CAD/D) AND COORDINATE GEOMETRY (COGO).



UNIT DETAIL  
NOT TO SCALE

SHEET 8.07

**TAX MAP**  
**TOWNSHIP OF HOWELL**

MONMOUTH COUNTY NEW JERSEY  
SCALE: 1" = 50' DATE: 02/15/2016

GLEN J. LLOYD, P.L.S. LAND SURVEYOR LIC. NO. GS 37598

MASER CONSULTING P.A.  
331 NEWMAN SPRINGS ROAD, SUITE 203, RED BANK, N.J. 07701  
(732) 383-1950, FAX (732) 383-1984  
WEB SITE ADDRESS: WWW.MASERCONSULTING.COM