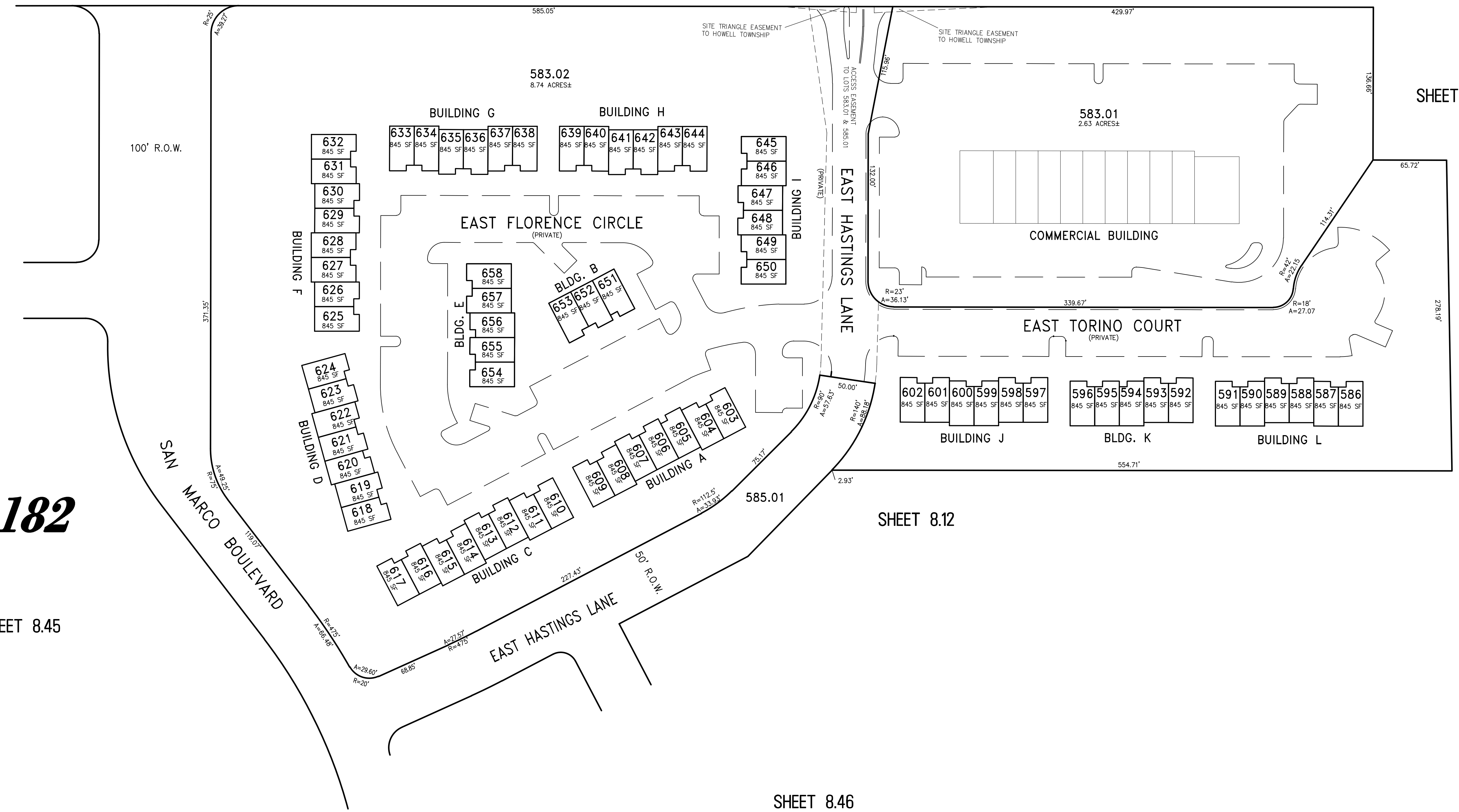


REVISIONS		
DATE	NAME	LIC. No.
12/15/17	GLEN J. LLOYD P.L.S.	37598

NOTE:
THIS SHEET HAS BEEN DRAWN USING COMPUTER AIDED
DRAFTING/DESIGN (CAD/D) AND COORDINATE GEOMETRY (COGO).

NEW JERSEY STATE
HIGHWAY ROUTE NO. 33

SHEET 8.05

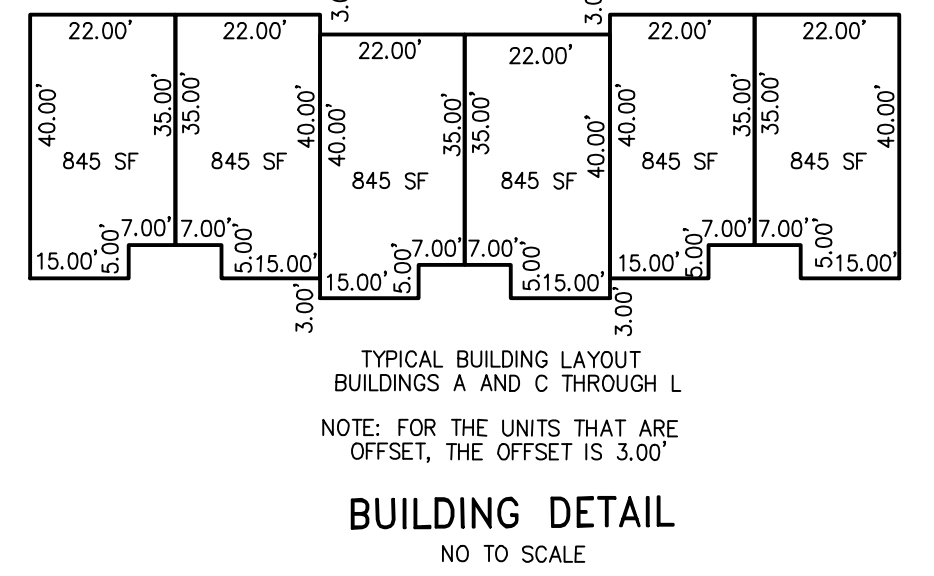
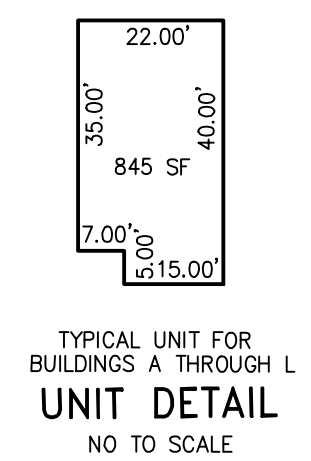


182

SHEET 8.45

SHEET 8.12

SHEET 8.46



THIS SHEET WAS FORMALLY CERTIFIED ON
SEPTEMBER 14, 2009, ASSIGNED SERIAL
NUMBER 941, SIGNED BY THOMAS J. REILLY,
C.T.A., LOCAL PROPERTY, FIELD ASSISTANT
AND SANTO C. DIDONATO, C.T.A.,
SUPERVISING FIELD REPRESENTATIVE.

**TAX MAP
TOWNSHIP OF HOWELL**

MONMOUTH COUNTY NEW JERSEY
SCALE: 1" = 50' DATE: 02-15-2016
GLEN J. LLOYD, P.L.S. LAND SURVEYOR LIC. NO. GS 37598

MASER CONSULTING P.A. 24 GA 27986500
331 NEWMAN SPRINGS ROAD, SUITE 203, RED BANK, N.J. 07701
(732) 383-1950, FAX (732) 383-1984
WEB SITE ADDRESS: WWW.MASERCONSULTING.COM

COLTS NECK CROSSING AT HOWELL
SHEET PAGES 11, 12, 14 & 15
PART OF OLD PLATE 69