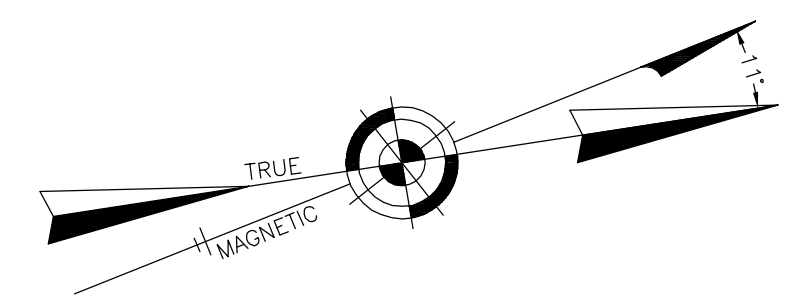


NOTE:
THIS SHEET HAS BEEN DRAWN USING COMPUTER AIDED DRAFTING/DESIGN (CAD/D) AND COORDINATE GEOMETRY (GOCO).

REVISIONS		
DATE	NAME	LIC. No.
04/30/12	RICHARD A. SCHULZ, P.L.S.	37607



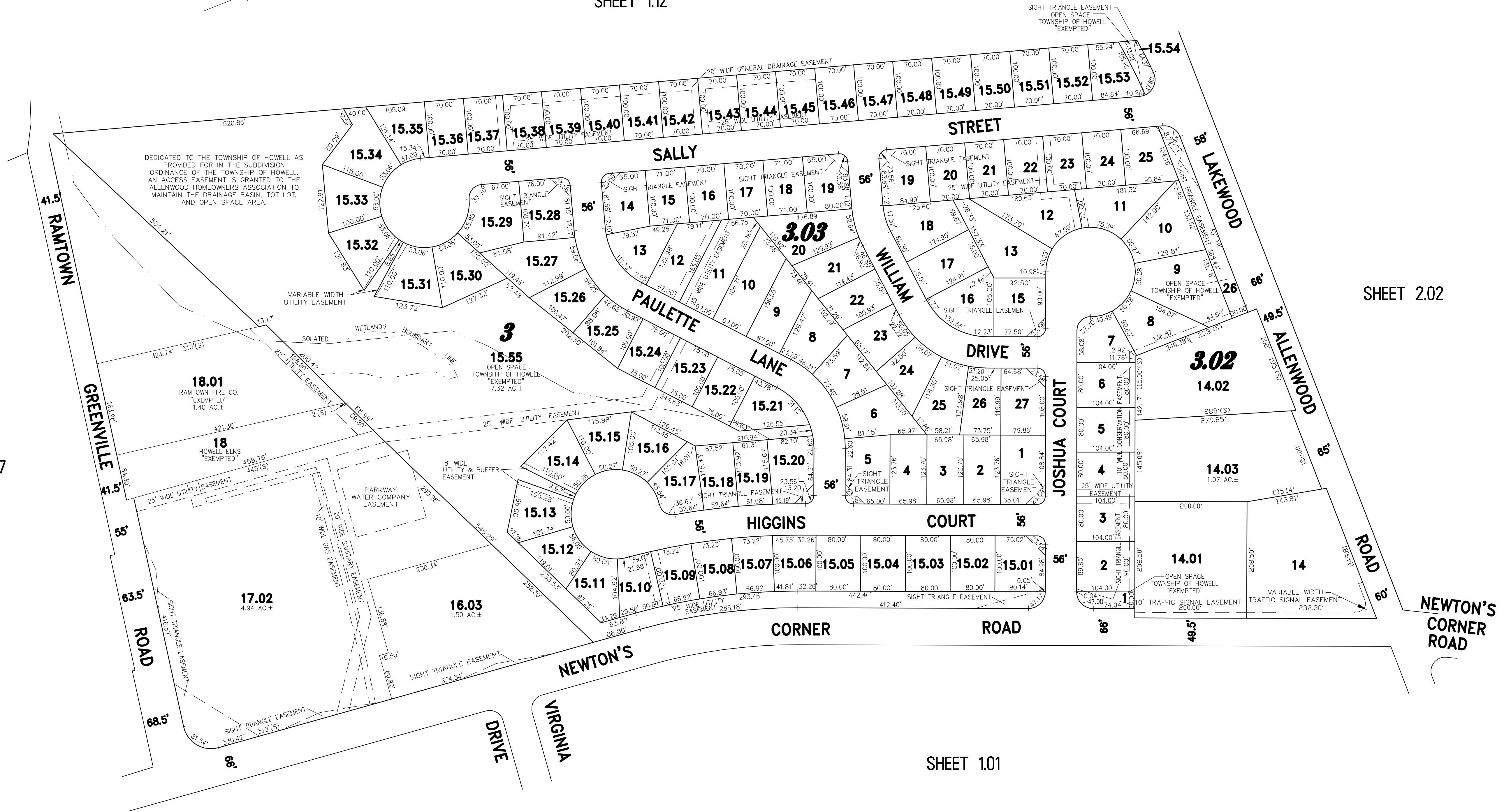
SHEET 1.12

SHEET 1.07

SHEET 1.02

SHEET 1.01

SHEET 2.02



REVISED BY REMINGTON AND VERNICK ENGINEERS - 5-22-2008 - 13211062

COLUMBIA PINES
PART OF OLD PLATE 11

THIS SHEET WAS FORMALLY CERTIFIED ON
SEPTEMBER 14, 2009,
ASSIGNED SERIAL NUMBER 941,
SIGNED BY THOMAS J. REILLY, C.T.A.,
LOCAL PROPERTY, FIELD ASSISTANT
AND SANTO C. DIDONATO, C.T.A.,
SUPERVISING FIELD REPRESENTATIVE.

TAX MAP
TOWNSHIP OF HOWELL
MONMOUTH COUNTY NEW JERSEY
SCALE: 1" = 100' DATE: 6-21-2005
CRAIG F. REMINGTON LAND SURVEYOR LIC. NO. 23924
REMINGTON, VERNICK & VENA ENGINEERS
24 GA 28003300
9 ALLEN STREET, TOMS RIVER, N.J. 08753
(732) 286-9220, FAX (732) 505-8416
WEB SITE ADDRESS: WWW.RVE.COM