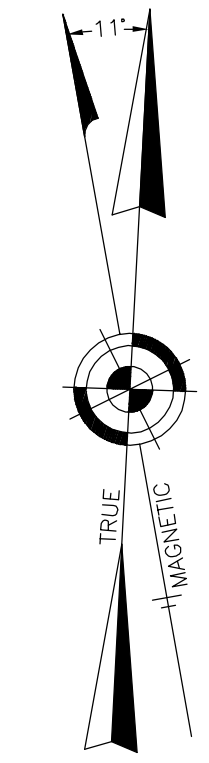
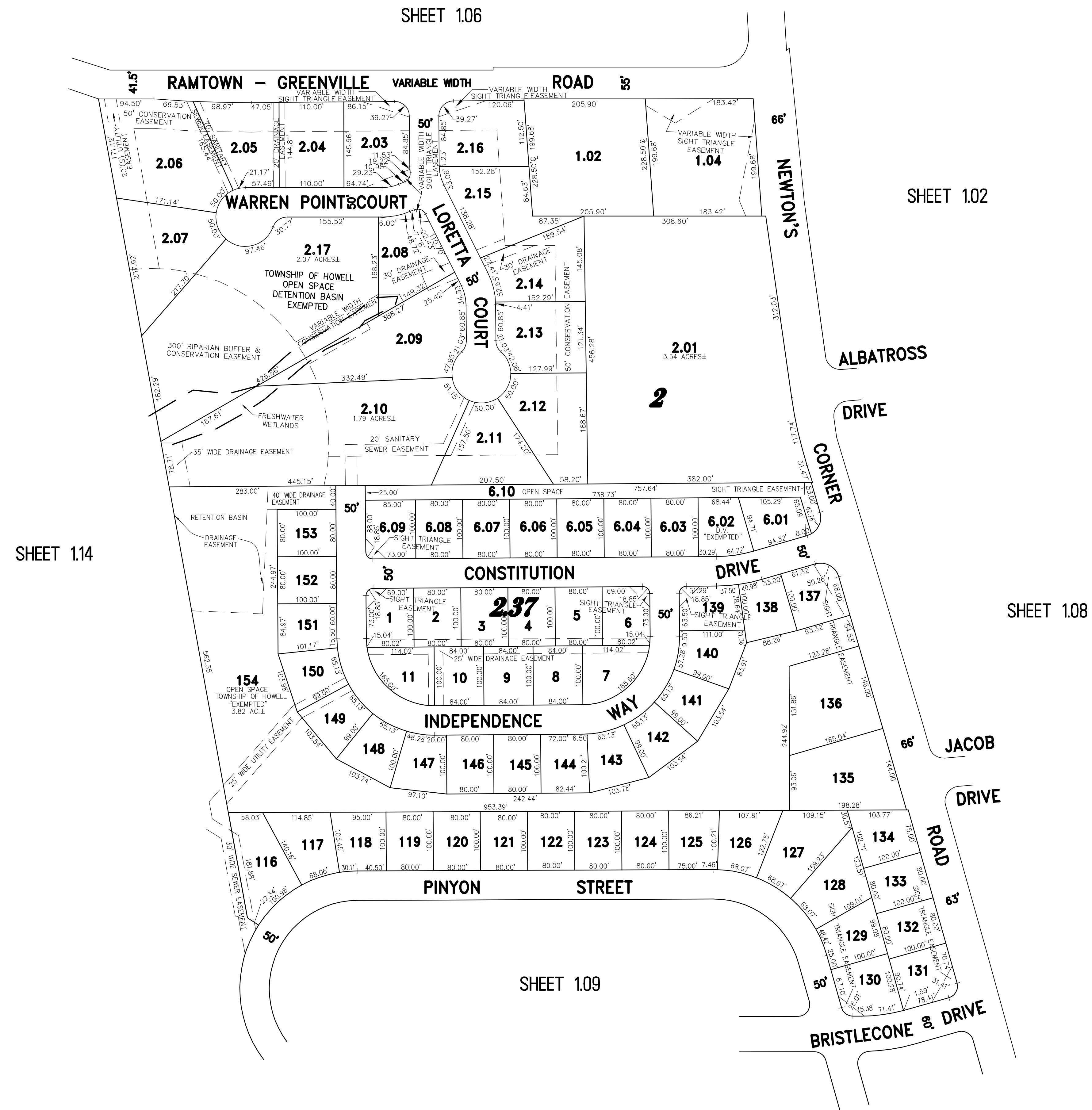


NOTE:  
THIS SHEET HAS BEEN DRAWN USING COMPUTER AIDED DRAFTING/DESIGN (CAD/D) AND COORDINATE GEOMETRY (COGO).



| REVISIONS |                           |          |
|-----------|---------------------------|----------|
| DATE      | NAME                      | LIC. No. |
| 05/31/11  | RICHARD A. SCHULZ, P.L.S. | 37607    |
| 07/19/12  | RICHARD A. SCHULZ, P.L.S. | 37607    |
| 03/10/15  | RICHARD A. SCHULZ, P.L.S. | 37607    |
|           |                           |          |
|           |                           |          |



THIS SHEET WAS FORMALLY CERTIFIED ON SEPTEMBER 14, 2009, ASSIGNED SERIAL NUMBER 941, SIGNED BY THOMAS J. REILLY, C.T.A., LOCAL PROPERTY, FIELD ASSISTANT AND SANTO C. DIDONATO, C.T.A., SUPERVISING FIELD REPRESENTATIVE.

**TAX MAP**  
**TOWNSHIP OF HOWELL**

MONMOUTH COUNTY NEW JERSEY  
SCALE: 1" = 100' DATE: 6-21-2005

CRAIG F. REMINGTON LAND SURVEYOR LIC. NO. 23924

**REMINGTON, VERNICK & VENA ENGINEERS**  
24 GA 28003300  
9 ALLEN STREET, TOMS RIVER, N.J. 08753  
(732) 286-9220, FAX (732) 505-8416  
WEB SITE ADDRESS: WWW.RVVE.COM

REVISED BY REMINGTON AND VERNICK ENGINEERS - 5-22-2008 - 13211062

NEWTON'S CROSSING & PART OF BRIARCREST  
PART OF OLD PLATE 11