

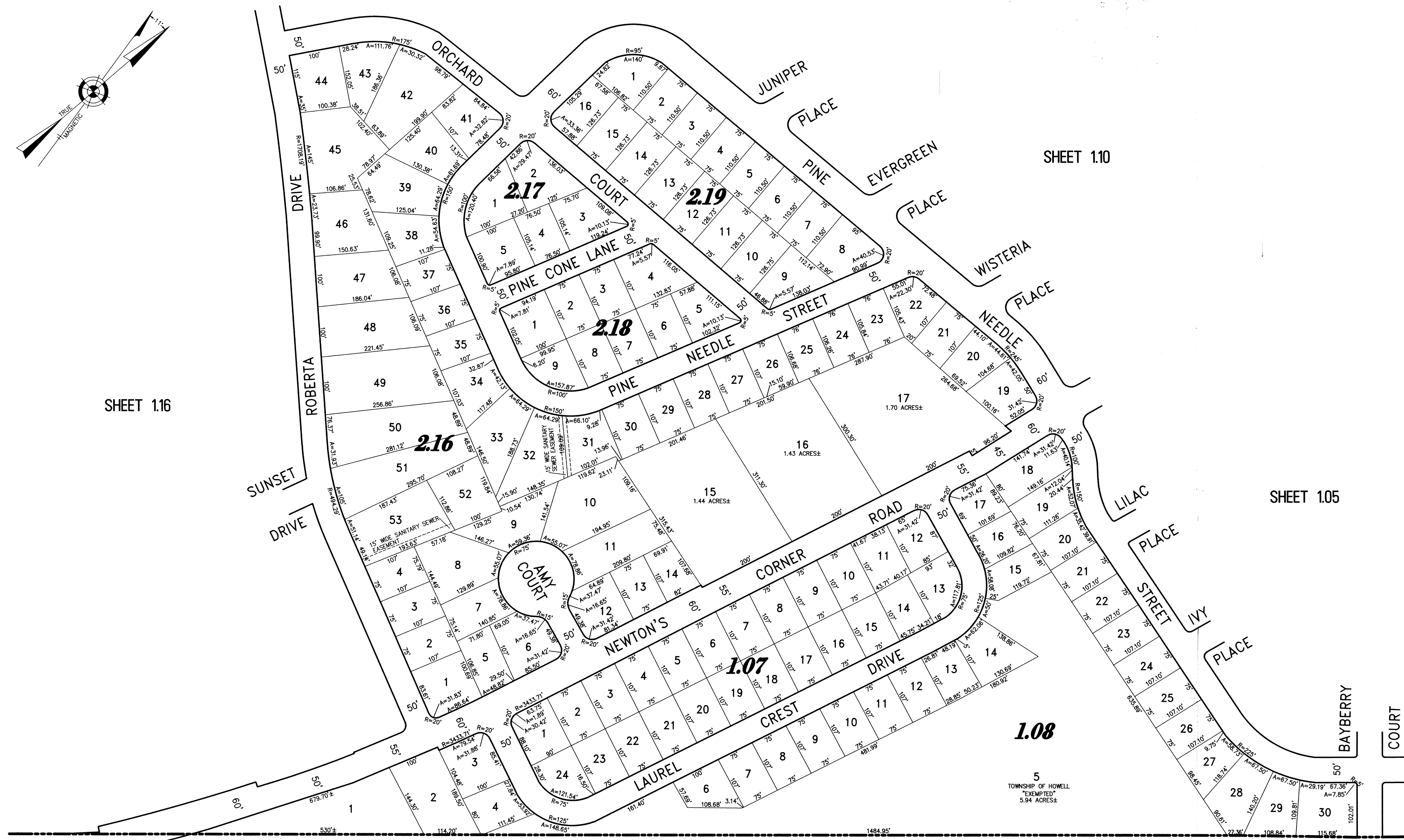
NOTE:
THIS SHEET HAS BEEN DRAWN USING COMPUTER AIDED DRAFTING/DESIGN
(CADD) AND COORDINATE GEOMETRY (GOGO).

SHEET 1.15

SHEET 1.10

SHEET 1.16

SHEET 1.05



TOWNSHIP OF BRICK
COUNTY OF OCEAN

NEW JERSEY DEPARTMENT OF THE TREASURY
DIVISION OF TAXATION
PROPERTY ADMINISTRATION
APPROVED AS A TAX MAP PURSUANT TO THE AUTHORITY OF
P.L.S. 1961-115 & 94-50-1
FOR THE DIRECTOR, DIVISION OF TAXATION

Thomas C. Bell C.T.A.
THOMAS C. BELL, CHIEF, LOCAL PROPERTY FIELD ASSISTANCE

Santo C. DiDonato C.T.A.
SANTO C. DICONATO, SUPERVISING FIELD REPRESENTATIVE

DATE: SEP 14 2009 SERIAL NO. 0 A 91

TAX MAP
TOWNSHIP OF HOWELL

MONMOUTH COUNTY NEW JERSEY
SCALE: 1" = 100' DATE: 6-21-2005

CRAIG F. REMINGTON LAND SURVEYOR LIC. NO. 23924

REMINGTON, VERNICK & VENA ENGINEERS
24 GA 28003300
9 ALLEN STREET, TOMS RIVER, N.J. 08753
(732) 286-9220, FAX (732) 505-8416
WEB SITE ADDRESS: WWW.RVVE.COM

PART OF LAUREL MANOR & PARKWAY PINES
PART OF PLATE 2