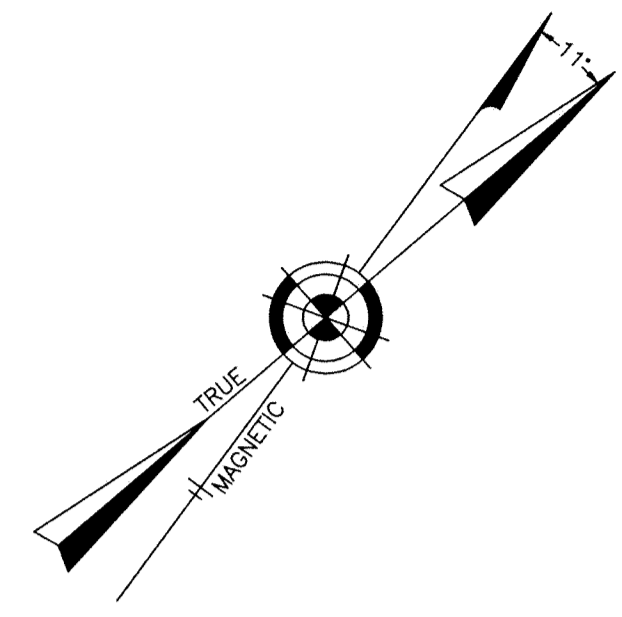


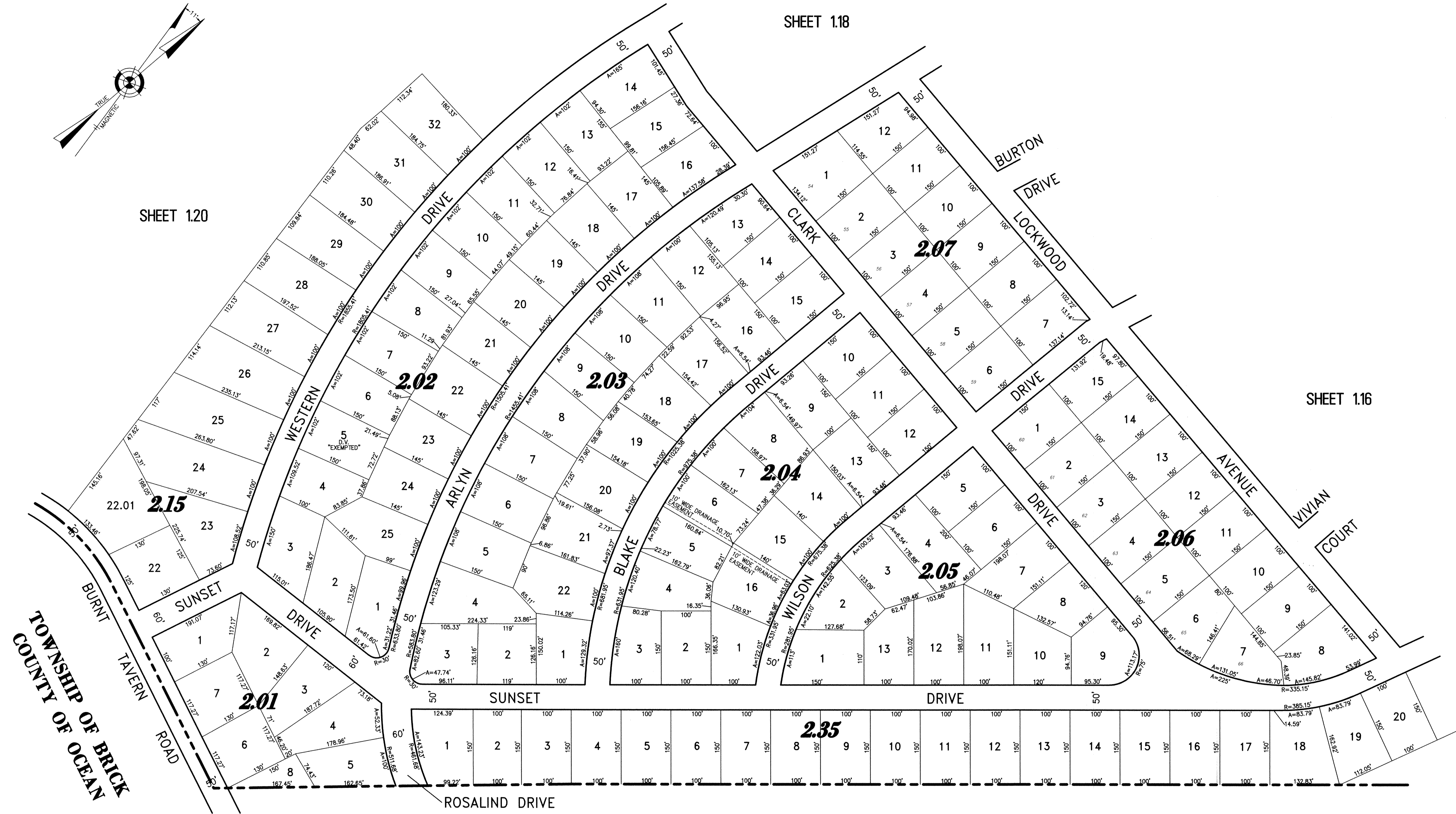
NOTE:
THIS SHEET HAS BEEN DRAWN USING COMPUTER AIDED DRAFTING/DESIGN (CADD) AND COORDINATE GEOMETRY (GOGO).



SHEET 118

SHEET 120

SHEET 116



TOWNSHIP OF BRICK
COUNTY OF OCEAN

TAX MAP
TOWNSHIP OF HOWELL

MONMOUTH COUNTY NEW JERSEY
SCALE: 1" = 100' DATE: 6-21-2005
CRAIG F. REMINGTON LAND SURVEYOR LIC. NO. 23924

NEW JERSEY DEPARTMENT OF THE TREASURY
DIVISION OF TAXATION
PROPERTY ADMINISTRATION
APPROVED AS A TAX MAP PURSUANT TO THE AUTHORITY OF
N.J.A.C. 17:27 & 17:28
FOR THE DIRECTOR, DIVISION OF TAXATION
THOMAS C. PELLICCI, CHIEF, LOCAL PROPERTY FIELD ASSISTANCE
SANTO C. DIDONATO, SUPERVISING FIELD REPRESENTATIVE
DATE: SEP 14 2005 SERIAL NO. 941

REMINGTON, VERNICK & VENA ENGINEERS
24 GA 28003300
9 ALLEN STREET, TOMS RIVER, NJ 08753
(732) 296-9220, FAX (732) 505-9446
WEB SITE ADDRESS: WWW.RVVE.COM

PARKWAY PINES - PART OF SECTION 3 & 5
PART OF OLD PLATE 1