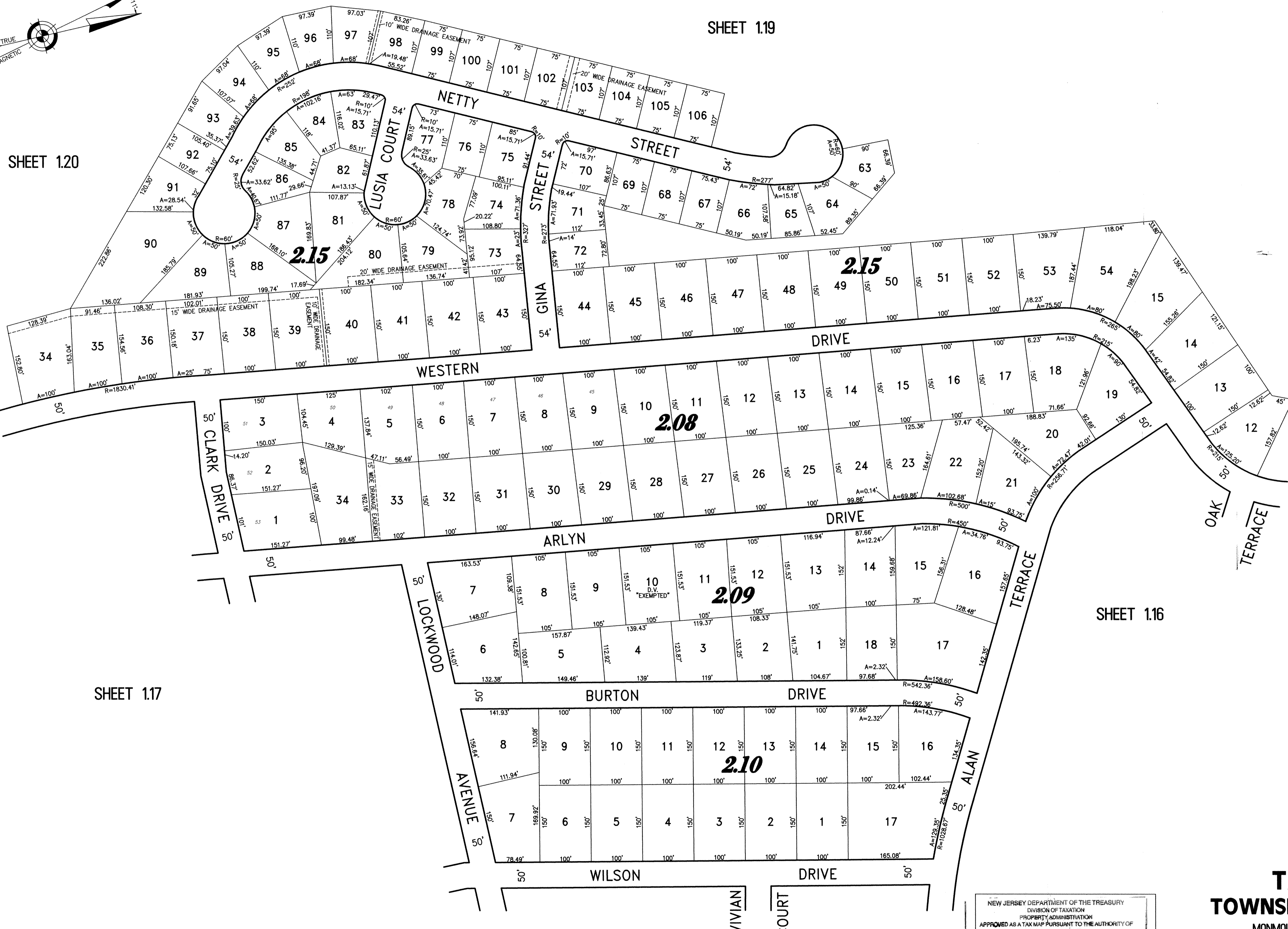
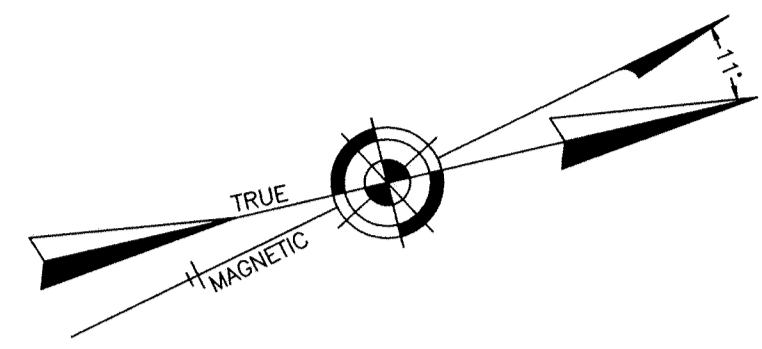


NOTE:
THIS SHEET HAS BEEN DRAWN USING COMPUTER AIDED DRAFTING/DESIGN (CADD) AND COORDINATE GEOMETRY (GOCO).



SHEET 1.20

SHEET 1.19

SHEET 1.17

SHEET 1.16

SHEET 1.16

PART OF PARKWAY PINES
PART OF OLD PLATES 1, 2, & 3

NEW JERSEY DEPARTMENT OF THE TREASURY
DIVISION OF TAXATION
PROPERTY ADMINISTRATION
APPROVED AS A TAX MAP PURSUANT TO THE AUTHORITY OF
N.J.S.A. 54:1-15 & 54:50-1
FOR THE DIRECTOR, DIVISION OF TAXATION
C.T.A.
THOMAS J. HELLY, CHIEF, LOCAL PROPERTY FIELD ASSISTANCE
C.T.A.
Santo C. DiDonato
SANTO C. DIDONATO, SUPERVISOR, FIELD REPRESENTATIVE
DATE: SEP 14 2018 SERIAL NO. 1841

TAX MAP TOWNSHIP OF HOWELL

MONMOUTH COUNTY NEW JERSEY
SCALE: 1" = 100' DATE: 6-21-2005

CRAIG F. REMINGTON LAND SURVEYOR LIC. NO. 23924



REMINGTON, VERNICK & VENA ENGINEERS
24 GA 28003300
9 ALLEN STREET, TOMS RIVER, N.J. 08753
(732) 286-9220, FAX (732) 505-8446
WEB SITE ADDRESS: WWW.RVVE.COM