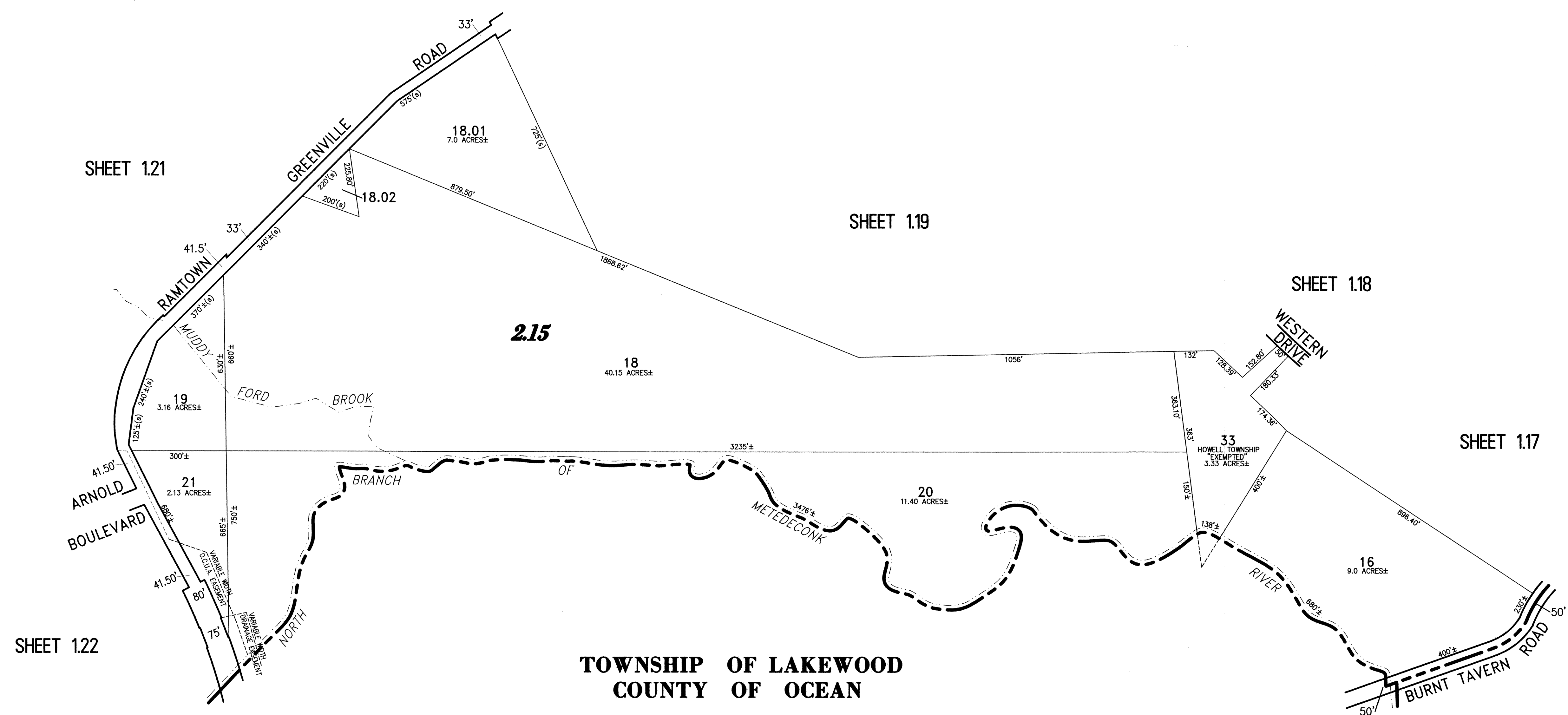
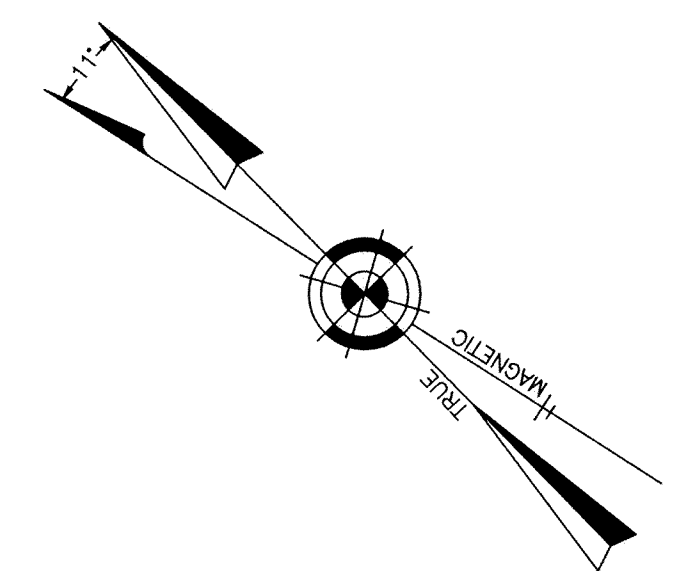


NOTE:  
THIS SHEET HAS BEEN DRAWN USING COMPUTER AIDED DRAFTING/DESIGN (CAD/D) AND COORDINATE GEOMETRY (GOGO).



TOWNSHIP OF LAKEWOOD  
COUNTY OF OCEAN

PART OF OLD PLATES 1 & 3

NEW JERSEY DEPARTMENT OF THE TREASURY  
DIVISION OF TAXATION  
PROPERTY ADMINISTRATION  
APPROVED AS A TAX MAP PURSUANT TO THE AUTHORITY OF  
N.J.S.A. 9:11-15 & 9:11-16  
FOR THE DIRECTOR, DIVISION OF TAXATION  
THOMAS C. BELLOTTI, LOCAL GOVERNMENT FIELD ASSISTANCE C.T.A.  
*Thomas C. DiDonato* C.T.A.  
SANTO C. DICICCATO, SUPERVISING FIELD REPRESENTATIVE  
DATE: SEP 14 2005 SERIAL NO. 941

**TAX MAP**  
**TOWNSHIP OF HOWELL**  
MONMOUTH COUNTY NEW JERSEY  
SCALE: 1" = 200' DATE: 6-21-2005  
**CRAIG F. REMINGTON LAND SURVEYOR LIC. NO. 23924**  
**REMINGTON, VERNICK & VENA ENGINEERS**  
24 GA 28003300  
9 ALLEN STREET, TOMS RIVER, N.J. 08753  
(732) 286-9220, FAX (732) 505-8416  
WEB SITE ADDRESS: WWW.RVVE.COM