

TAX MAP TOWNSHIP OF HOWELL

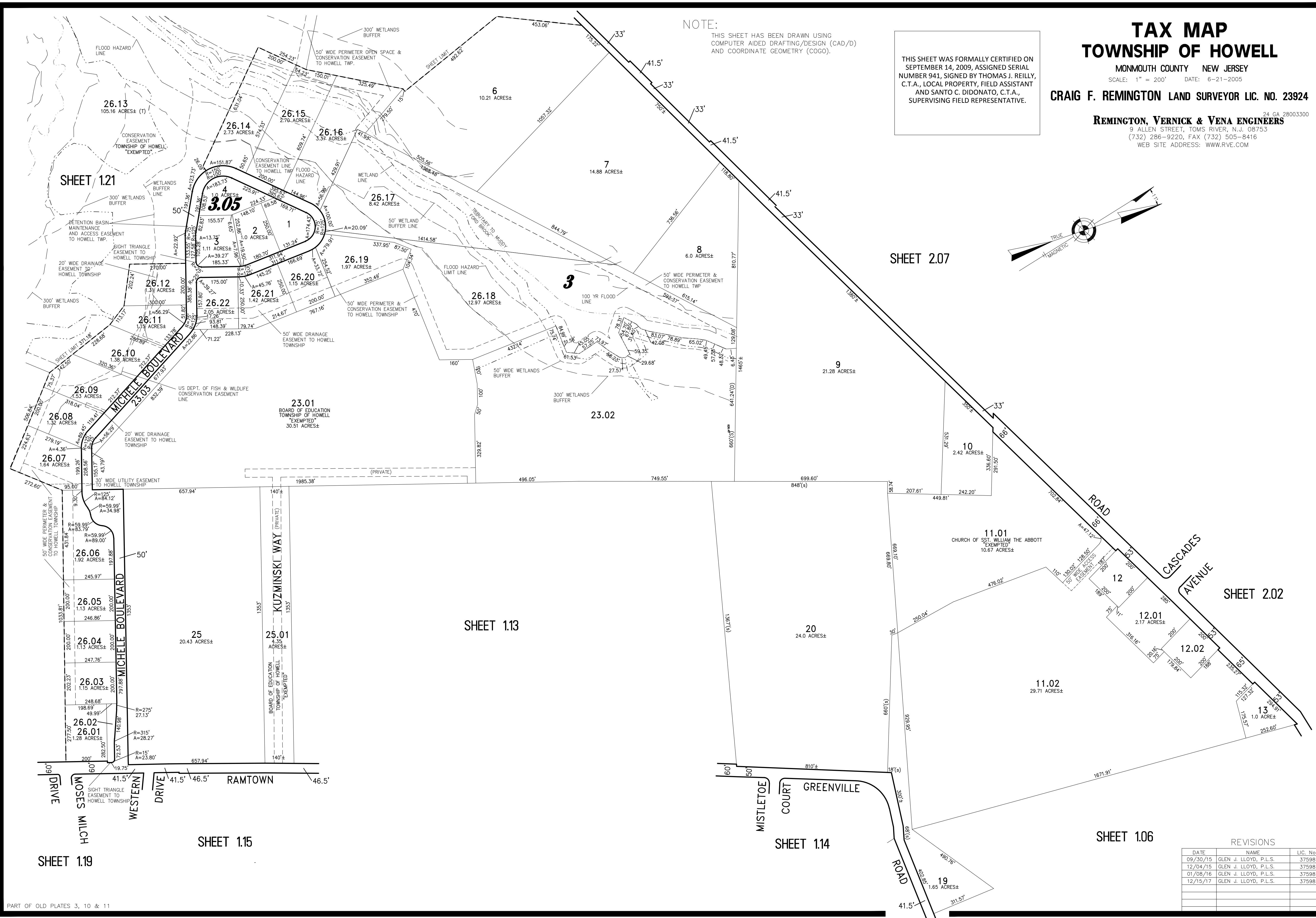
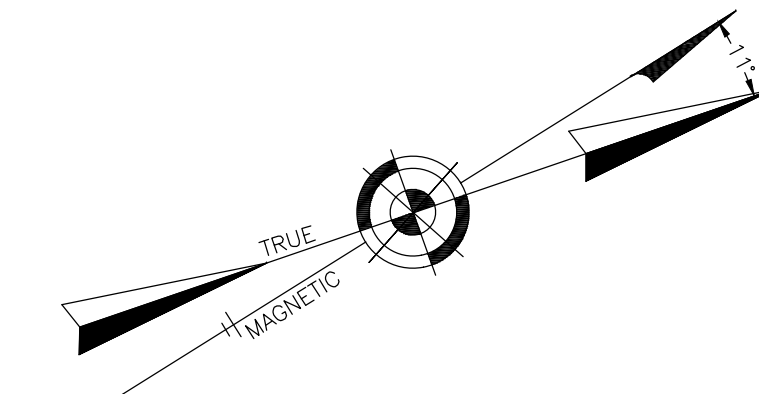
MONMOUTH COUNTY NEW JERSEY
SCALE: 1" = 200' DATE: 6-21-2005

CRAIG F. REMINGTON LAND SURVEYOR LIC. NO. 23924

REMINGTON, VERNICK & VENA ENGINEERS
24 GA 28003300
9 ALLEN STREET, TOMS RIVER, N.J. 08753
(732) 286-9220, FAX (732) 505-8416
WEB SITE ADDRESS: WWW.RVE.COM

THIS SHEET WAS FORMALLY CERTIFIED ON
SEPTEMBER 14, 2009, ASSIGNED SERIAL
NUMBER 941, SIGNED BY THOMAS J. REILLY,
C.T.A., LOCAL PROPERTY, FIELD ASSISTANT
AND SANTO C. DIDONATO, C.T.A.,
SUPERVISING FIELD REPRESENTATIVE.

NOTE:
THIS SHEET HAS BEEN DRAWN USING
COMPUTER AIDED DRAFTING/DESIGN (CAD/D)
AND COORDINATE GEOMETRY (COGO).



SHEET 1.21

SHEET 2.07

SHEET 2.02

SHEET 1.13

SHEET 1.15

SHEET 1.19

SHEET 1.14

SHEET 1.06

REVISIONS		
DATE	NAME	LIC. No.
09/30/15	GLEN J. LLOYD, P.L.S.	37598
12/04/15	GLEN J. LLOYD, P.L.S.	37598
01/08/16	GLEN J. LLOYD, P.L.S.	37598
12/15/17	GLEN J. LLOYD, P.L.S.	37598