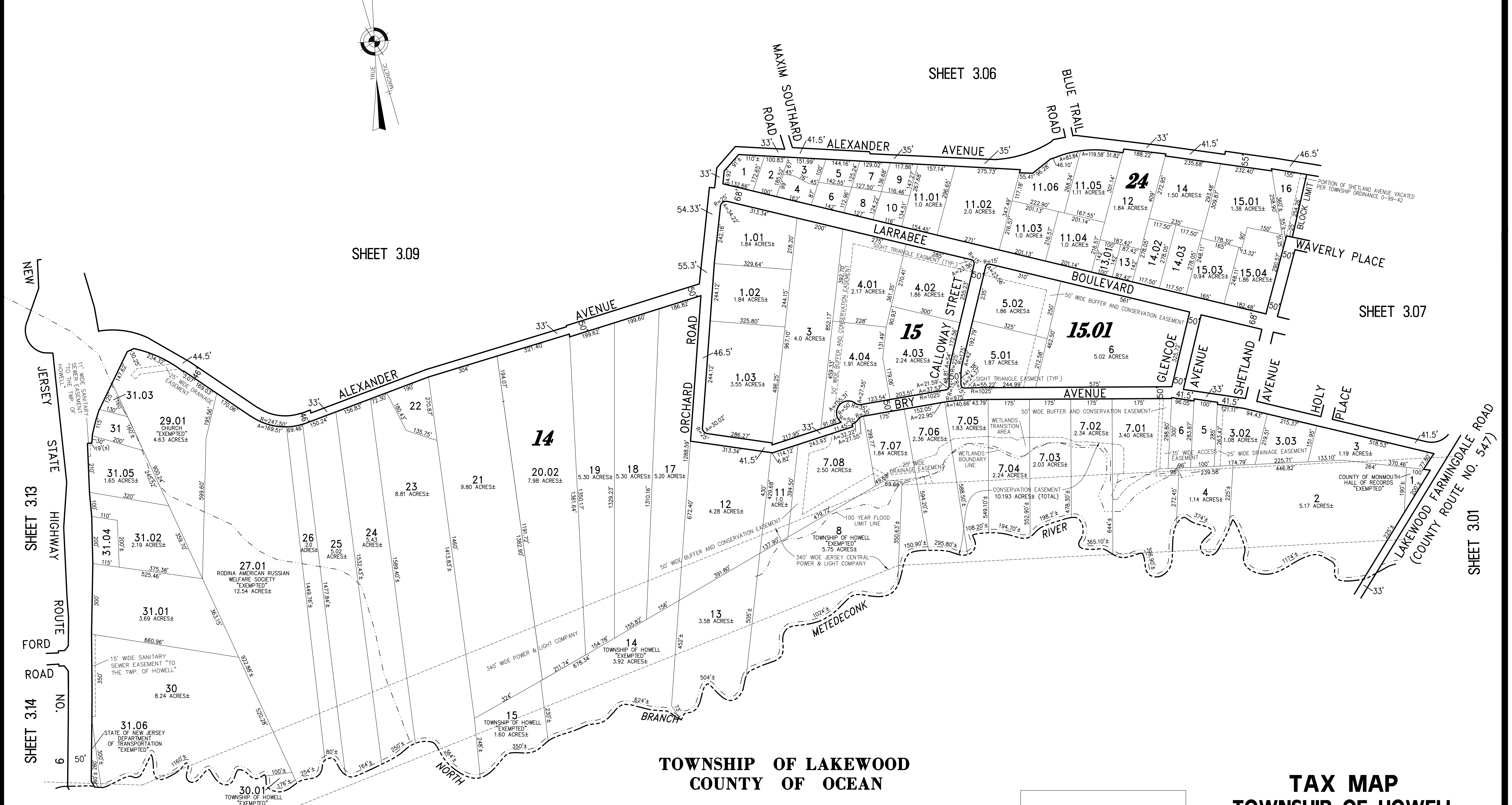
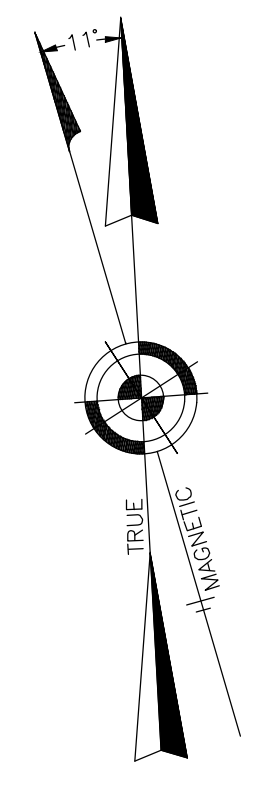


| REVISIONS | | |
|-----------|---------------------------|----------|
| DATE | NAME | LIC. No. |
| 07/25/12 | RICHARD A. SCHULZ, P.L.S. | 37607 |
| 02/15/16 | GLEN J. LLOYD, P.L.S. | 37598 |
| 12/15/17 | GLEN J. LLOYD, P.L.S. | 37598 |
| | | |
| | | |

NOTE:
THIS SHEET HAS BEEN DRAWN USING COMPUTER AIDED
DRAFTING/DESIGN (CAD/D) AND COORDINATE GEOMETRY (COGO).



**TOWNSHIP OF LAKEWOOD
COUNTY OF OCEAN**

THIS SHEET WAS FORMALLY CERTIFIED ON
SEPTEMBER 14, 2009, ASSIGNED SERIAL
NUMBER 941, SIGNED BY THOMAS J. REILLY,
C.T.A., LOCAL PROPERTY, FIELD ASSISTANT
AND SANTO C. DIDONATO, C.T.A.,
SUPERVISING FIELD REPRESENTATIVE.

**TAX MAP
TOWNSHIP OF HOWELL**
MONMOUTH COUNTY NEW JERSEY
SCALE: 1" = 200' DATE: 6-21-2005
CRAIG F. REMINGTON LAND SURVEYOR LIC. NO. 23924
REMINGTON, VERNICK & VENA ENGINEERS
24 GA 28003300
9 ALLEN STREET, TOMS RIVER, N.J. 08753
(732) 286-9220, FAX (732) 505-8416
WEB SITE ADDRESS: WWW.RVE.COM

PART OF OLD PLATES 5 & 6