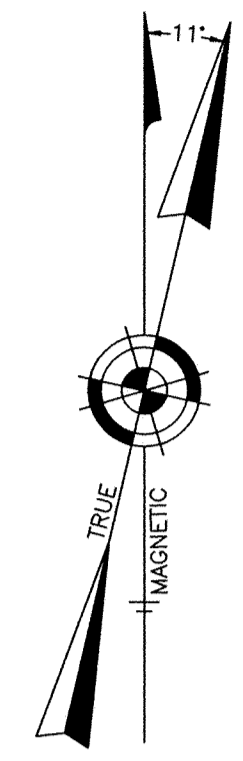


NOTE:
THIS SHEET HAS BEEN DRAWN USING COMPUTER AIDED DRAFTING/DESIGN (CADD) AND COORDINATE GEOMETRY (GOGG).



SHEET 2.03

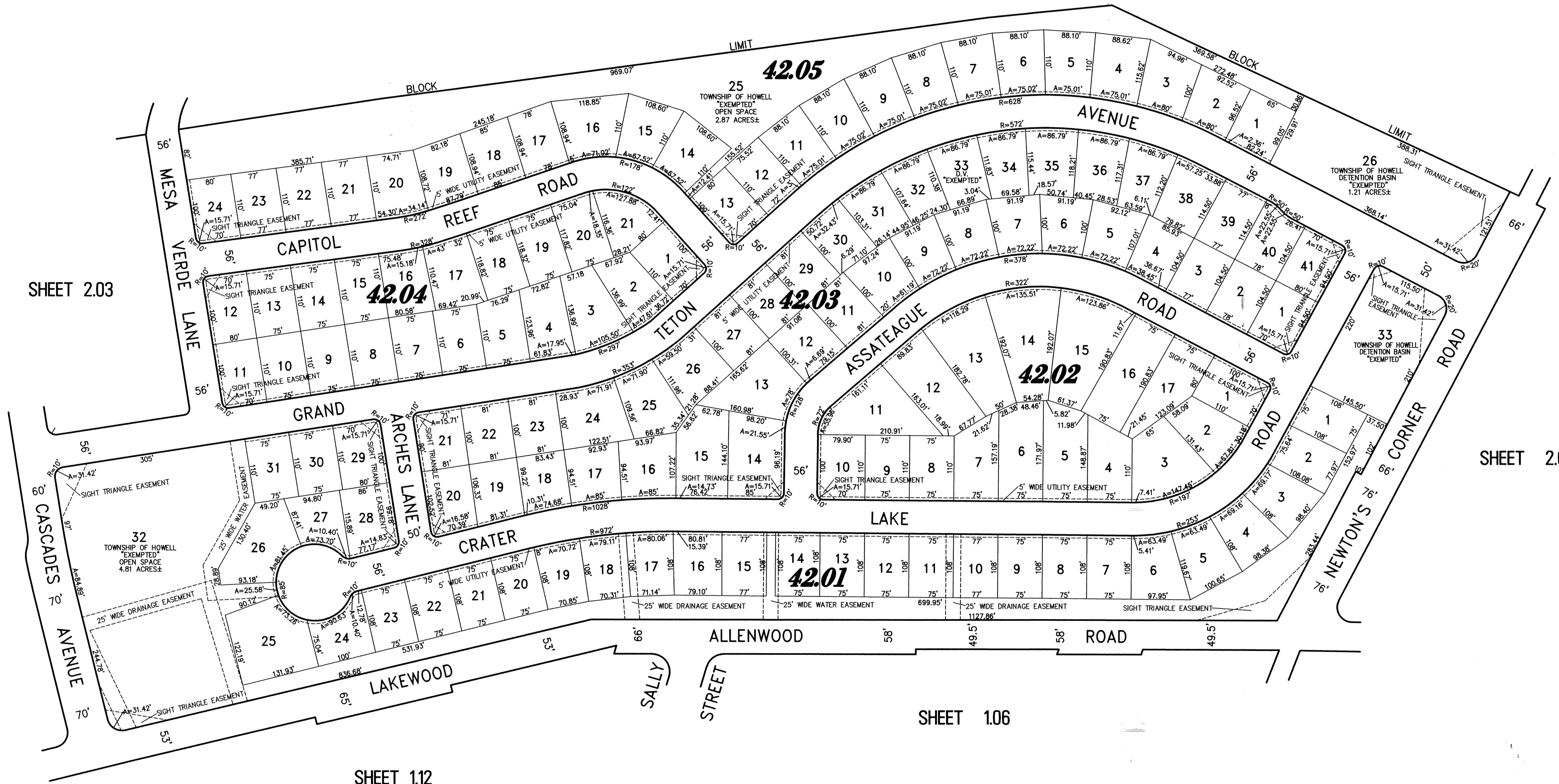
SHEET 2.03

SHEET 2.07

SHEET 1.12

SHEET 1.06

SHEET 2.01



NEW JERSEY DEPARTMENT OF THE TREASURY
DIVISION OF TAXATION
PROPERTY ADMINISTRATION
APPROVED AS A TAX MAP PURSUANT TO THE AUTHORITY OF
NJ S.A. 17:27 & 17:28
FOR THE OPERATION OF DIVISION OF TAXATION
THOMAS J. HILL, CHIEF, LOCAL PROPERTY FIELD REPRESENTATIVE
Sally C. Donato, CTA
SANTO C. DICICCO, SUPERVISING FIELD REPRESENTATIVE
DATE: SEP 14 2009 REVISED: 9 4 1

TAX MAP
TOWNSHIP OF HOWELL
MONMOUTH COUNTY NEW JERSEY
SCALE: 1" = 100' DATE: 6-21-2005
CRAIG F. REMINGTON LAND SURVEYOR LIC. NO. 23924
REMINGTON, VERNICK & VENA ENGINEERS
24 GA 28003300
9 ALLEN STREET, TOMS RIVER, NJ 08753
(732) 286-9220, FAX (732) 505-8416
WEB SITE ADDRESS: WWW.RVVE.COM

PARKSIDE COMMONS SECTIONS 1 & 2
PART OF OLD MAPS 10, 11 & 12