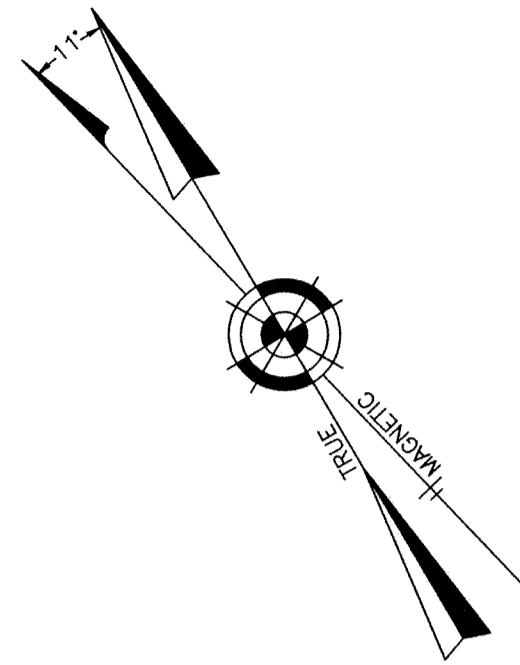
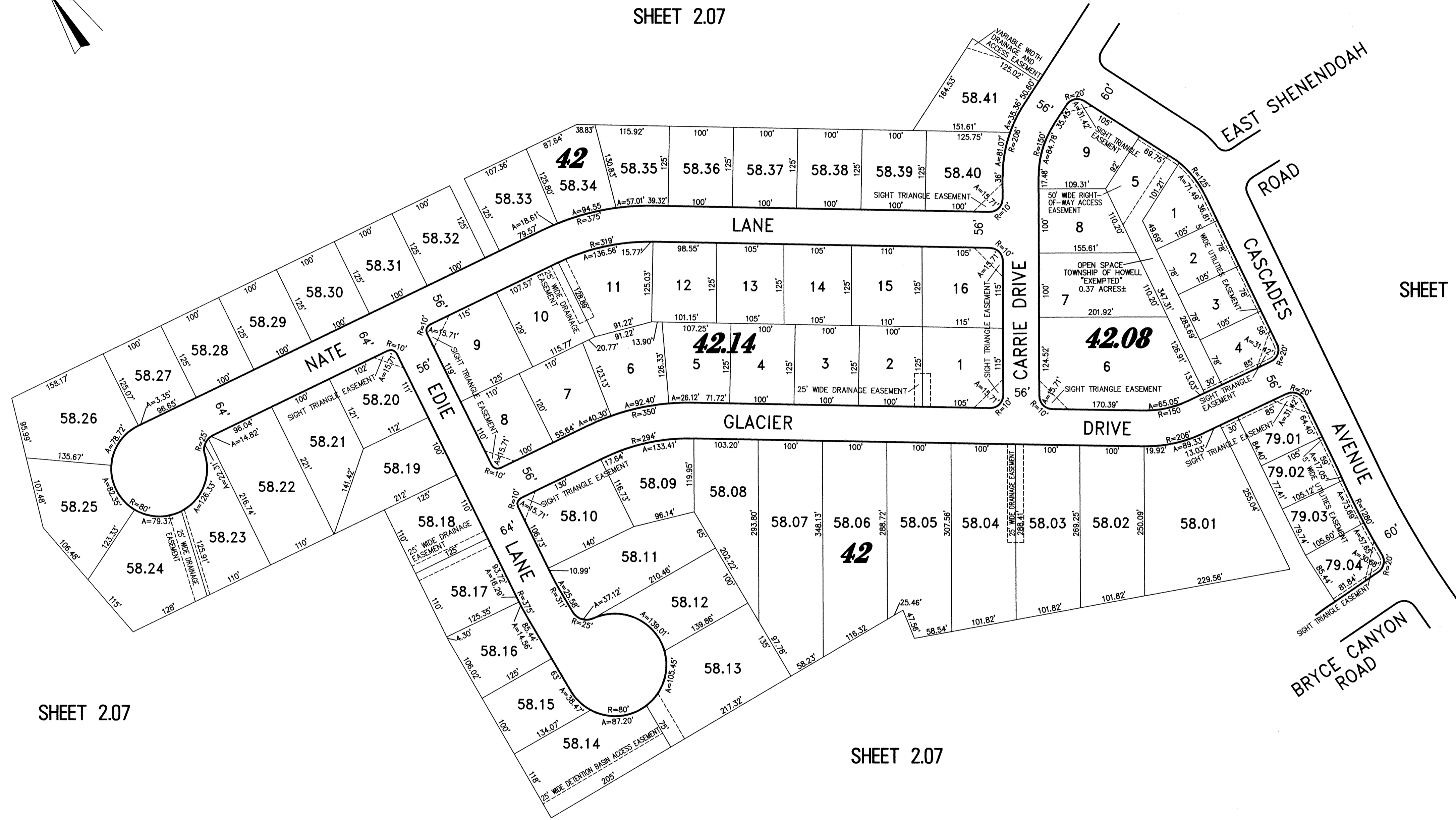


NOTE:
THIS SHEET HAS BEEN DRAWN USING COMPUTER AIDED DRAFTING/DESIGN (CAD/D) AND COORDINATE GEOMETRY (GOGO).



SHEET 2.07



SHEET 2.04

SHEET 2.07

SHEET 2.07

PART OF CROSSWOOD ESTATES
PART OF OLD PLATE 13

NEW JERSEY DEPARTMENT OF THE TREASURY
DIVISION OF TAXATION
PROPERTY ADMINISTRATION
APPROVED AS A TAX MAP PURSUANT TO THE AUTHORITY OF
P.L.S.A. 1997-11 § 54-90.1
FOR THE DEPARTMENT OF TAXATION
THOMAS J. HILL, CHIEF, PROPERTY FIELD ASSISTANCE
Santo C. DiDonato, C.T.A.
SANTO C. DIDONATO, SUPERVISING FIELD REPRESENTATIVE
DATE: SEP 14 2009 SERIAL NO. 941

TAX MAP TOWNSHIP OF HOWELL

MONMOUTH COUNTY NEW JERSEY
SCALE: 1" = 100' DATE: 6-21-2005

CRAIG F. REMINGTON LAND SURVEYOR LIC. NO. 23924



REMINGTON, VERNICK & VENA ENGINEERS
24 GA 28003300
9 ALLEN STREET, TOMS RIVER, N.J. 08753
(732) 286-9220, FAX (732) 505-8416
WEB SITE ADDRESS: WWW.RVE.COM