

# TAX MAP TOWNSHIP OF HOWELL

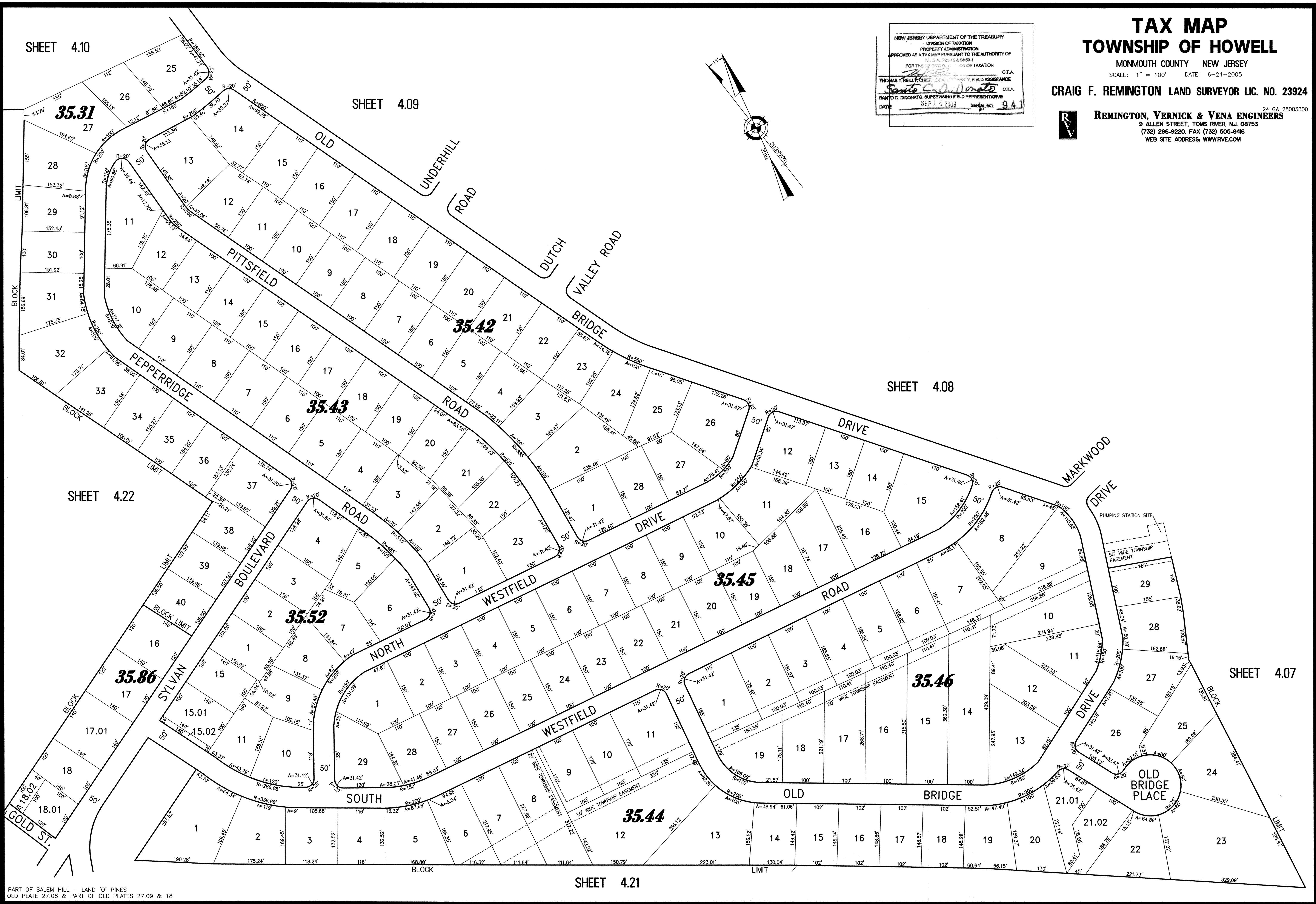
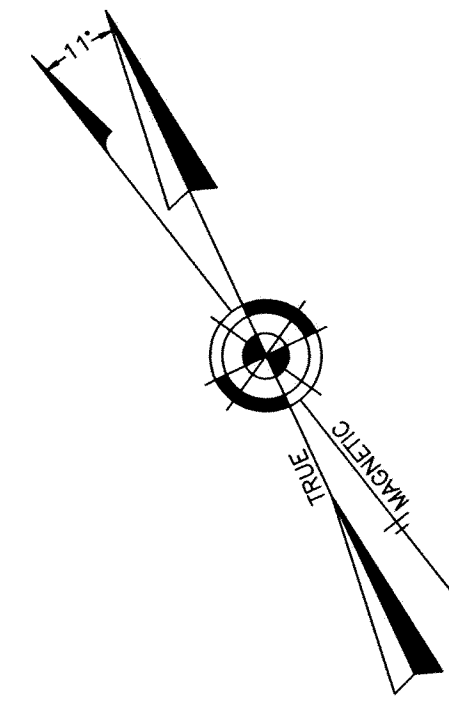
MONMOUTH COUNTY NEW JERSEY  
SCALE: 1" = 100' DATE: 6-21-2005

CRAIG F. REMINGTON LAND SURVEYOR LIC. NO. 23924



REMINGTON, VERNICK & VENA ENGINEERS  
24 CA 28003300  
9 ALLEN STREET, TOMS RIVER, N.J. 08753  
(732) 296-9220, FAX (732) 505-9446  
WEB SITE ADDRESS: WWW.RVE.COM

NEW JERSEY DEPARTMENT OF THE TREASURY  
DIVISION OF TAXATION  
PROPERTY ADMINISTRATION  
APPROVED AS A TAX MAP PURSUANT TO THE AUTHORITY OF  
N.J.S.A. 54:1-15 & 54:90-1  
FOR THE DIRECTOR, DIVISION OF TAXATION  
C.T.A.  
THOMAS J. REILLY, CHIEF, LOCAL PROPERTY FIELD ASSISTANCE  
C.T.A.  
Santo C. DiDonato  
SANTO C. DIDONATO, SUPERVISING FIELD REPRESENTATIVE  
C.T.A.  
DATE: SEP 14 2009 SERIAL NO. 941



PART OF SALEM HILL - LAND 'O' PINES  
OLD PLATE 27.08 & PART OF OLD PLATES 27.09 & 18