

REVISIONS		
DATE	NAME	LIC. No.
12/15/17	GLEN J. LLOYD P.L.S.	37598

SHEET 4.14

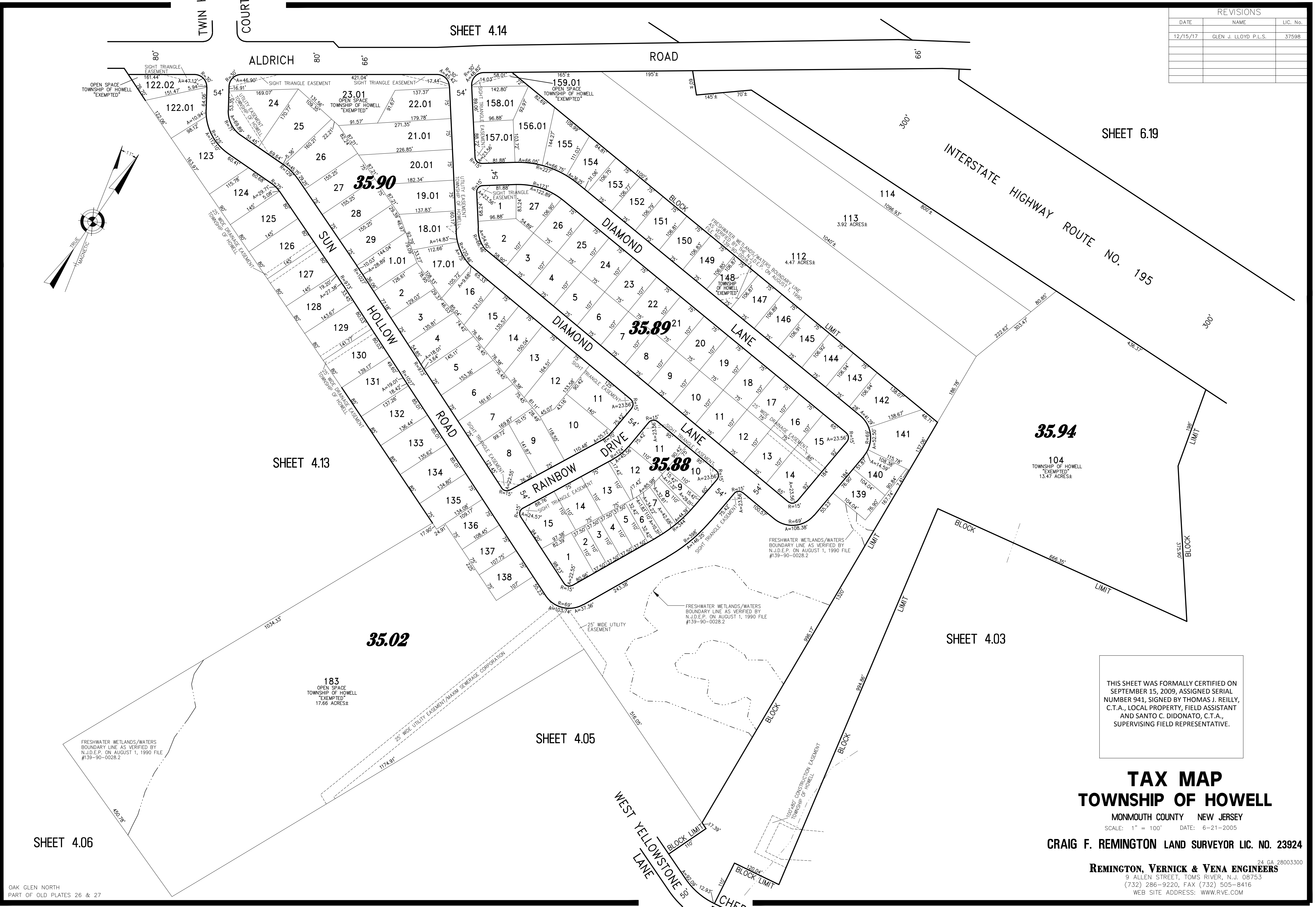
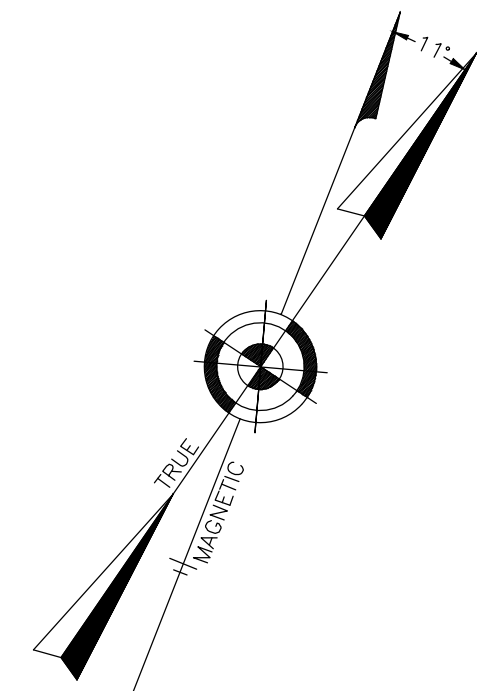
SHEET 6.19

SHEET 4.13

SHEET 4.03

SHEET 4.05

SHEET 4.06



THIS SHEET WAS FORMALLY CERTIFIED ON SEPTEMBER 15, 2009, ASSIGNED SERIAL NUMBER 941, SIGNED BY THOMAS J. REILLY, C.T.A., LOCAL PROPERTY, FIELD ASSISTANT AND SANTO C. DIDONATO, C.T.A., SUPERVISING FIELD REPRESENTATIVE.

TAX MAP TOWNSHIP OF HOWELL

MONMOUTH COUNTY NEW JERSEY
SCALE: 1" = 100' DATE: 6-21-2005

CRAIG F. REMINGTON LAND SURVEYOR LIC. NO. 23924

REMINGTON, VERNICK & VENA ENGINEERS
24 GA 28003300
9 ALLEN STREET, TOMS RIVER, N.J. 08753
(732) 286-9220, FAX (732) 505-8416
WEB SITE ADDRESS: WWW.RVE.COM

OAK GLEN NORTH
PART OF OLD PLATES 26 & 27